



FOR IMMEDIATE RELEASE
September 28, 2010

CONTACT: NANCY GRAVATT
202.452.7115/ ngravatt@steel.org

Preliminary Steel Imports decline 11% in August
Import Market Share at 21%

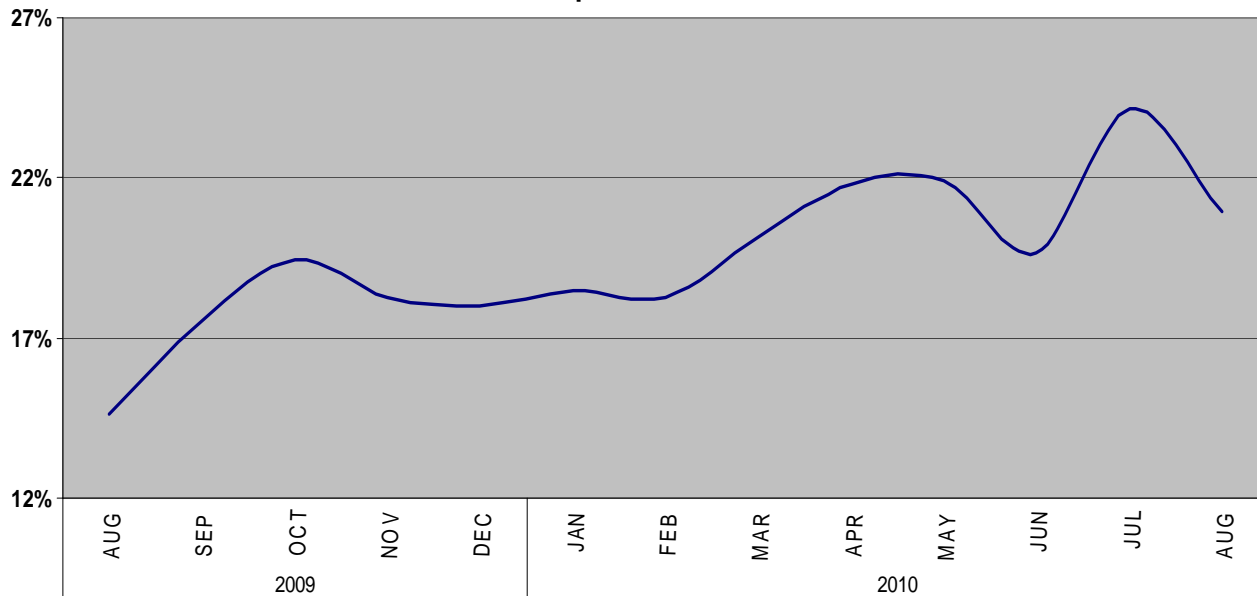
Washington, D.C. – Based on preliminary Census Bureau data, the American Iron and Steel Institute (AISI) reported today that the U.S. imported a total of 2,155,000 net tons (NT) of steel in August, including 1,668,000 NT of finished steel (down 11% and 8%, respectively, from July data). Annualized total and finished steel imports in 2010 would be 24.4 and 19.0 million NT, respectively, up 51% and 34% vs. 2009. Finished steel import market share was an estimated 21% in August, vs. year-high 24% in July and a low of 15% in August 2009. For the year-to-date, finished steel import market share is 21%. In the first 8 months of 2010, total and finished steel imports were up 54% and 30%, respectively, compared to the same period last year.

Key finished steel products with significant import increases in August 2010 compared to July include heavy structural shapes (up 32%), reinforcing bars (up 25%) and hot-rolled bars (up 22%). Many finished steel products have registered significant year-to-date import increases in 2010 vs. the same period last year, including wire rods (up 147%), hot rolled sheets (up 52%) and hot-dipped galvanized sheets and strips (up 44%).

Steel Mill Product	Aug (prelim)	July final	% var Aug vs. July	(8 mo) YTD 2010	(8 mo) YTD 2009	% var '10 vs. '09	2010 Annualized	2009 12 mo.	% var 2010 ann. vs 2009 12 mo.
Ingots and Billets and Slabs	483,704	616,430	-21.5%	3,568,306	810,969	340.0%	5,352,459	2,014,510	165.7%
Sheets Hot Rolled	164,930	236,758	-30.3%	1,569,412	1,033,984	51.8%	2,354,118	1,739,209	35.4%
Oil Country Goods	254,900	267,697	-4.8%	1,512,704	1,422,235	6.4%	2,269,056	1,602,112	41.6%
Line Pipe	123,308	171,413	-28.1%	1,111,590	1,155,656	-3.8%	1,667,385	1,603,357	4.0%
Sheets & Strip Galv HD	128,004	127,203	0.6%	1,013,987	703,370	44.2%	1,520,981	1,033,046	47.2%
Wire Rods	122,872	124,767	-1.5%	964,960	391,217	146.7%	1,447,440	761,207	90.2%
Sheets Cold Rolled	83,805	105,398	-20.5%	761,718	739,486	3.0%	1,142,577	1,137,582	0.4%
Bars - Hot Rolled	108,913	89,273	22.0%	703,245	407,658	72.5%	1,054,868	676,572	55.9%
Plates in Coils	81,658	91,160	-10.4%	696,671	482,555	44.4%	1,045,007	710,897	47.0%
Standard Pipe	67,918	69,715	-2.6%	495,622	431,186	14.9%	743,433	593,410	25.3%
Plates Cut Lengths	42,947	77,288	-44.4%	493,469	367,339	34.3%	740,204	530,221	39.6%
Wire Drawn	60,324	55,072	9.5%	424,730	298,814	42.1%	637,095	486,302	31.0%
Bars - Reinforcing	60,576	48,508	24.9%	367,917	340,498	8.1%	551,876	419,427	31.6%
Structural Shapes Heavy	58,622	44,330	32.2%	355,121	267,424	32.8%	532,682	371,420	43.4%
Tin Plate	45,483	51,701	-12.0%	317,932	202,501	57.0%	476,898	322,954	47.7%
Sheets & Strip All Other Met.	42,411	25,966	63.3%	299,522	198,300	51.0%	449,283	298,071	50.7%
Mechanical Tubing	42,134	42,289	-0.4%	260,654	250,211	4.2%	390,981	332,661	17.5%
All Other	182,296	180,059	1.2%	1,368,217	1,087,038	25.9%	2,052,326	1,581,945	29.7%
TOTAL	2,154,805	2,425,027	-11.1%	16,285,777	10,590,441	53.8%	24,428,666	16,214,903	50.7%
SUBTOTAL Finished Imports	1,668,268	1,805,910	-7.6%	12,662,972	9,767,424	29.6%	18,994,458	14,178,578	34.0%

In August, the largest volumes of finished steel imports from offshore were from South Korea (198,000, up 1%), Japan (137,000 NT, up 9%), China (99,000, up 5%), Turkey (85,000 NT, up 74%) and Taiwan (71,000, up 165%). For the first eight months of 2010, the largest offshore suppliers were South Korea (1,282,000, up 37%), Japan (884,000 NT, up 30%) and Germany (603,000 NT, up 76%). Below are charts on estimated steel import market share in recent months and on finished steel imports from offshore by country.

Estimated Finished Steel Import Market Share For Past 12 Months



**U.S. IMPORTS OF FINISHED STEEL MILL PRODUCTS
BY COUNTRY OF ORIGIN
(thousands of net tons)**

COUNTRY	Aug. 2010	July 2010	% incr. July vs June	(8 mo.) YTD 2010	(8 mo.) YTD 2009	% incr. '10 YTD vs. '09	2010 full year (est.)	2009 Annual	% incr. 2010 an. vs. '09
South Korea	198	196	0.9%	1,282	936	37.0%	1,924	1,323	45.4%
Japan	137	126	8.7%	884	680	30.0%	1,326	981	35.2%
Germany	64	87	-26.2%	603	343	75.6%	905	495	82.9%
China	99	94	4.5%	566	1,258	-55.0%	849	1,463	-42.0%
India	63	145	-56.8%	548	431	27.4%	823	581	41.5%
Turkey	85	49	73.6%	453	370	22.3%	679	492	38.2%
Taiwan	71	27	164.8%	346	270	28.4%	519	371	39.9%
All Other	952	1,081	-12.0%	7,980	5,479	45.6%	11,971	8,474	41.3%
Total	1,668	1,806	-7.6%	12,663	9,767	29.6%	18,994	14,179	34.0%

**U.S. IMPORTS OF FINISHED STEEL MILL PRODUCTS
3 MONTHS ROLLING AVERAGE
(thousands of net tons)**

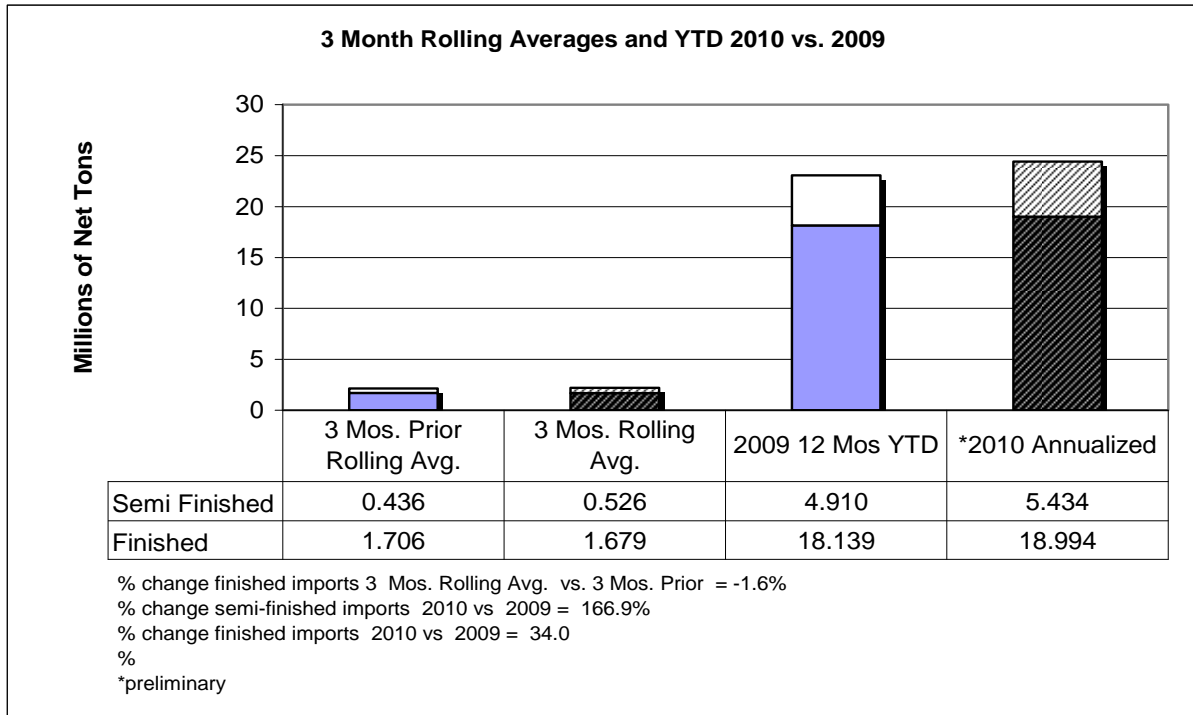
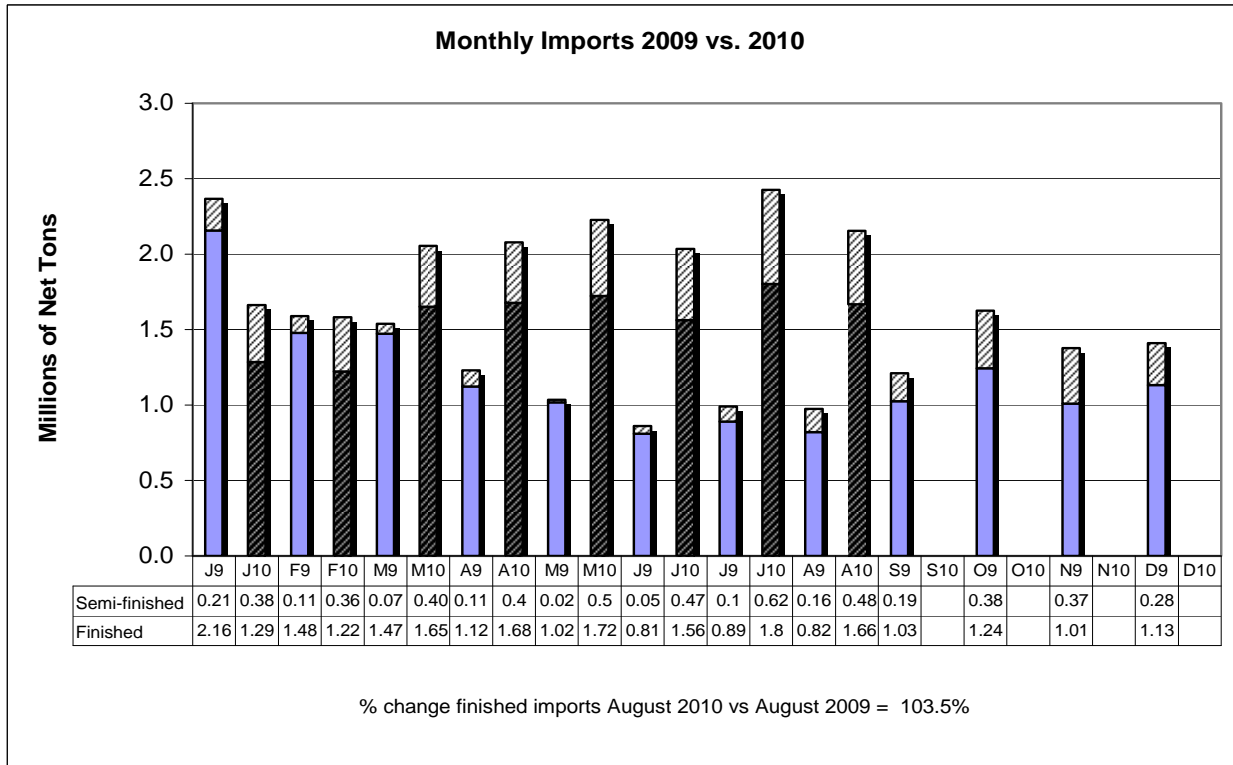
Product	Preliminary 3 Mos. Rolling Avg. Aug. 10 - Jun. 10	Actual 3 Mos. Prior May 10 - Mar. 10	Current 3 Months vs 3 Months Prior % Change
Oil Country Goods	241	193	24.7%
Sheets Hot Rolled	197	209	-5.8%
Line Pipe	134	156	-14.0%
Sheets & Strip Galv Hot	132	139	-5.7%
Wire Rods	122	129	-5.4%
Sheets Cold Rolled	94	98	-4.2%
Bars - Hot Rolled	92	92	0.4%
Plates in Coils	82	114	-28.1%
Standard Pipe	69	60	13.8%
Plates Cut Lengths	61	78	-21.8%
All Other	457	438	4.3%
Total	1,679	1,706	-1.6%

**U.S. IMPORTS OF FINISHED STEEL MILL PRODUCTS
3 MONTHS ROLLING AVERAGE
(thousands of net tons)**

Country	Preliminary 3 Mos. Rolling Avg. Aug. 10 - Jun. 10	Actual 3 Mos. Prior May 10 - Mar. 10	Current 3 Months vs 3 Months Prior % Change
South Korea	182	162	12.0%
Japan	111	118	-5.7%
China	91	61	49.6%
India	87	73	19.5%
Germany	71	108	-34.5%
Turkey	66	63	4.3%
Taiwan	58	42	38.2%
Netherlands	52	34	54.6%
Australia	44	48	-7.8%
Russia	37	24	50.4%
All Other	881	973	-9.5%
Total	1,679	1,706	-1.6%

Source: U.S. Department of Commerce

-MORE



AISI serves as the voice of the North American steel industry in the public policy arena and advances the case for steel in the marketplace as the preferred material of choice. AISI also plays a lead role in the development and application of new steels and steelmaking technology. AISI is comprised of 23 member companies, including integrated and electric furnace steelmakers, and 138 associate and affiliate members who are suppliers to or customers of the steel industry. AISI's member companies represent approximately 75 percent of both U.S. and North American steel capacity. For more news about steel and its applications, view AISI's Web site at www.steel.org.

-#####-