



**FOR IMMEDIATE RELEASE**  
November 23, 2010

**CONTACT: NANCY GRAVATT**  
202.452.7115/ [ngravatt@steel.org](mailto:ngravatt@steel.org)

**Preliminary Steel Imports Decline 14% in October**  
Import Market Share Still at 19%

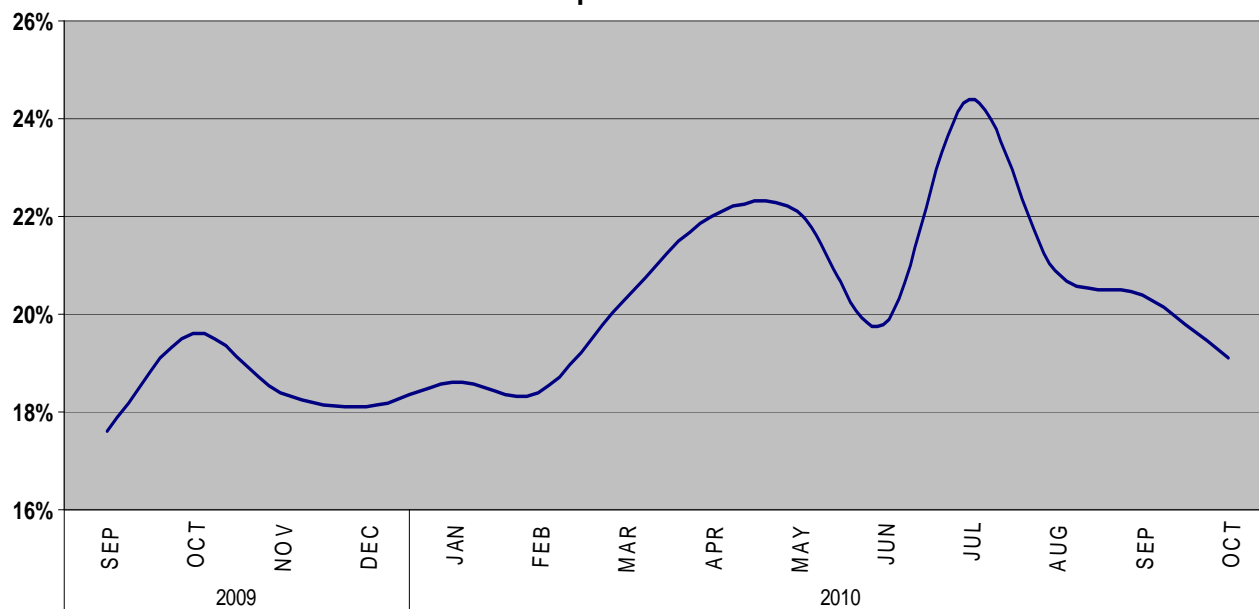
**Washington, D.C.** – Based on preliminary Census Bureau data, the American Iron and Steel Institute (AISI) reported today that the U.S. imported a total of 1,791,000 net tons (NT) of steel in October, including 1,489,000 NT of finished steel (down 14% and 6%, respectively, from September final data). Annualized total and finished steel imports in 2010 would be 24.2 and 18.9 million NT, respectively, up 49% and 33% vs. 2009. Since a year-high finished steel import share of 24% in July, import share has averaged around 20% over the past three months and was an estimated 19% in October, vs. a low of 15% in August 2009. For the year-to-date, finished steel import market share is 21%. In the first 10 months of 2010, total and finished steel imports are up 50% and 31%, respectively, compared to the same period last year.

Key finished steel products with significant import increases in October 2010 compared to September include heavy structural shapes (up 57%), standard pipe (up 35%), hot dipped galvanized sheet and strip (up 21%) and wire drawn (up 16%). Many finished steel products have registered large year-to-date import increases in 2010 vs. the same period last year, including wire rods (up 91%) and hot rolled sheets (up 42%).

Steel Mill Product	Oct (prelim.)	Sept. final	% var Oct. vs. Sep.	(10 mo) YTD 2010	(10 mo) YTD 2009	% var '10 vs. '09	2010 Annualized	2009 12 mo.	% var 2010 ann. vs 2009 12 mo.
Ingot and Billets and Slabs	300,221	488,862	-38.6%	4,357,390	1,376,510	216.6%	5,228,868	2,014,511	159.6%
Sheets Hot Rolled	163,754	229,486	-28.6%	1,962,866	1,382,355	42.0%	2,355,439	1,739,209	35.4%
Oil Country Goods	205,828	223,656	-8.0%	1,953,248	1,497,746	30.4%	2,343,898	1,602,111	46.3%
Line Pipe	94,808	109,608	-13.5%	1,318,705	1,379,602	-4.4%	1,582,446	1,603,357	-1.3%
Sheets & Strip Galv HD	115,758	95,548	21.2%	1,240,146	878,715	41.1%	1,488,175	1,033,045	44.1%
Wire Rods	77,414	96,534	-19.8%	1,139,282	596,446	91.0%	1,367,138	763,391	79.1%
Sheets Cold Rolled	109,609	114,535	-4.3%	986,095	932,703	5.7%	1,183,315	1,137,583	4.0%
Bars - Hot Rolled	85,477	84,075	1.7%	872,752	527,596	65.4%	1,047,302	674,388	55.3%
Plates in Coils	86,646	85,648	1.2%	854,513	629,385	35.8%	1,025,415	710,897	44.2%
Standard Pipe	87,752	65,177	34.6%	648,820	506,742	28.0%	778,584	593,409	31.2%
Plates Cut Lengths	54,389	67,473	-19.4%	617,218	455,879	35.4%	740,662	530,221	39.7%
Wire Drawn	58,362	50,110	16.5%	533,425	394,131	35.3%	640,110	486,302	31.6%
Bars - Reinforcing	28,430	46,747	-39.2%	443,166	389,702	13.7%	531,799	419,426	26.8%
Structural Shapes Heavy	49,234	31,421	56.7%	435,777	331,911	31.3%	522,933	371,418	40.8%
Tin Plate	42,017	40,595	3.5%	400,542	258,053	55.2%	480,651	322,955	48.8%
Sheets & Strip All Other Coated	28,113	31,127	-9.7%	359,030	247,953	44.8%	430,836	298,070	44.5%
Mechanical Tubing	39,601	40,178	-1.4%	340,473	294,175	15.7%	408,568	332,661	22.8%
All Other	163,428	175,529	-6.9%	1,710,595	1,348,223	26.9%	2,052,715	1,581,951	29.8%
<b>TOTAL</b>	<b>1,790,841</b>	<b>2,076,309</b>	<b>-13.7%</b>	<b>20,174,043</b>	<b>13,427,827</b>	<b>50.2%</b>	<b>24,208,854</b>	<b>16,214,905</b>	<b>49.3%</b>
<b>SUBTOTAL Finished Imports</b>	<b>1,488,556</b>	<b>1,585,093</b>	<b>-6.1%</b>	<b>15,757,741</b>	<b>12,036,868</b>	<b>30.9%</b>	<b>18,909,289</b>	<b>14,178,577</b>	<b>33.4%</b>

In October, the largest volumes of finished steel imports from offshore were from South Korea (183,000, down 12%), Japan (104,000 NT, down 8%), Germany (79,000 up 36%), India (70,000 NT, up 255%) and China (52,000, down 48%). Below are charts on estimated steel import market share in recent months and on finished steel imports from offshore by country.

**Estimated Finished Steel Import Market Share For Past 12 Months**



**U.S. IMPORTS OF FINISHED STEEL MILL PRODUCTS  
BY COUNTRY OF ORIGIN  
(thousands of net tons)**

COUNTRY	Oct. 2010	Sep. 2010	% incr. Oct. vs Sep.	(10 mo.) YTD 2010	(10 mo.) YTD 2009	% incr. '10 YTD vs. '09	2010 full year (est.)	2009 Annual	% incr. 2010 an. vs. '09
South Korea	183	208	-12.1%	1,674	1,113	50.4%	2,009	1,323	51.9%
Japan	104	113	-7.9%	1,103	823	34.1%	1,324	981	35.0%
Germany	79	58	36.3%	743	420	76.8%	891	495	80.2%
China	52	101	-48.2%	720	1,355	-46.9%	864	1,463	-41.0%
India	70	20	255.2%	638	522	22.2%	765	581	31.7%
Turkey	24	41	-40.2%	519	451	15.0%	622	492	26.6%
Taiwan	50	48	2.9%	444	330	34.4%	532	371	43.6%
All Other	926	996	-7.0%	9,918	7,023	41.2%	11,901	8,474	40.4%
<b>Total</b>	<b>1,489</b>	<b>1,585</b>	<b>-6.1%</b>	<b>15,758</b>	<b>12,037</b>	<b>30.9%</b>	<b>18,909</b>	<b>14,179</b>	<b>33.4%</b>

**U.S. IMPORTS OF FINISHED STEEL MILL PRODUCTS  
3 MONTHS ROLLING AVERAGE  
(thousands of net tons)**

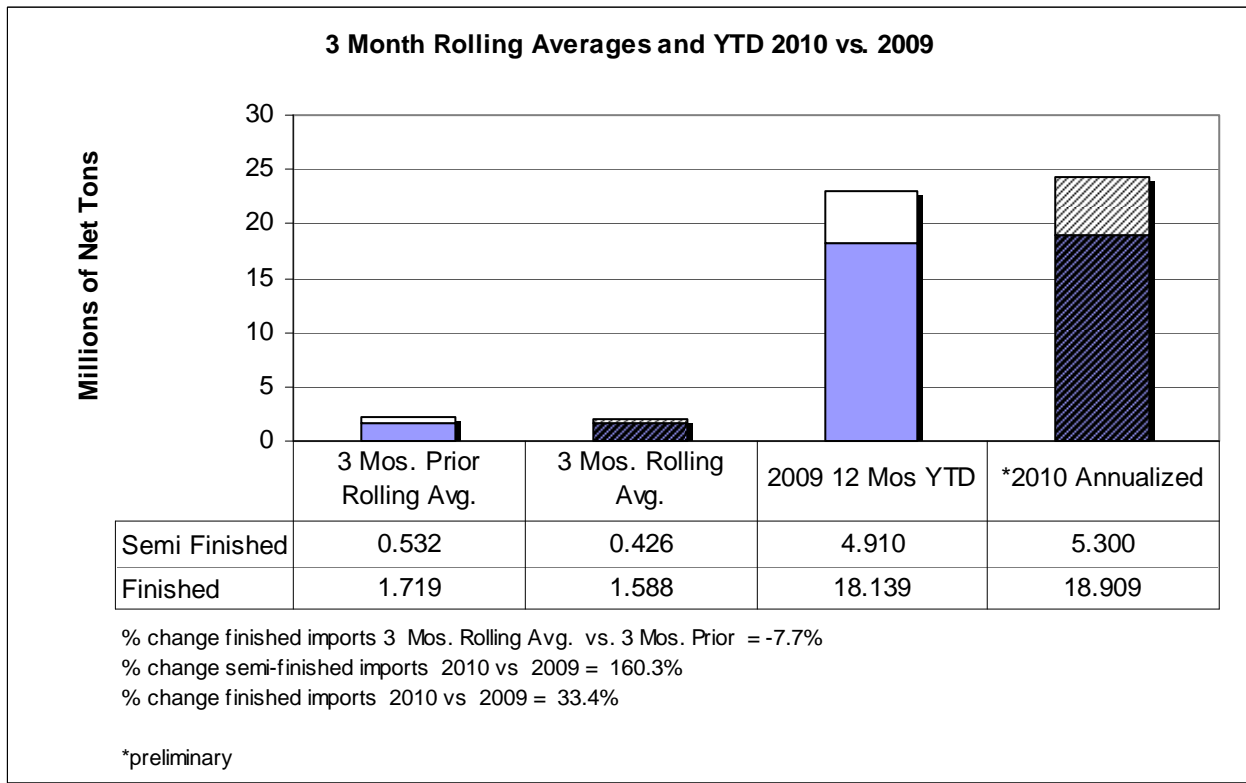
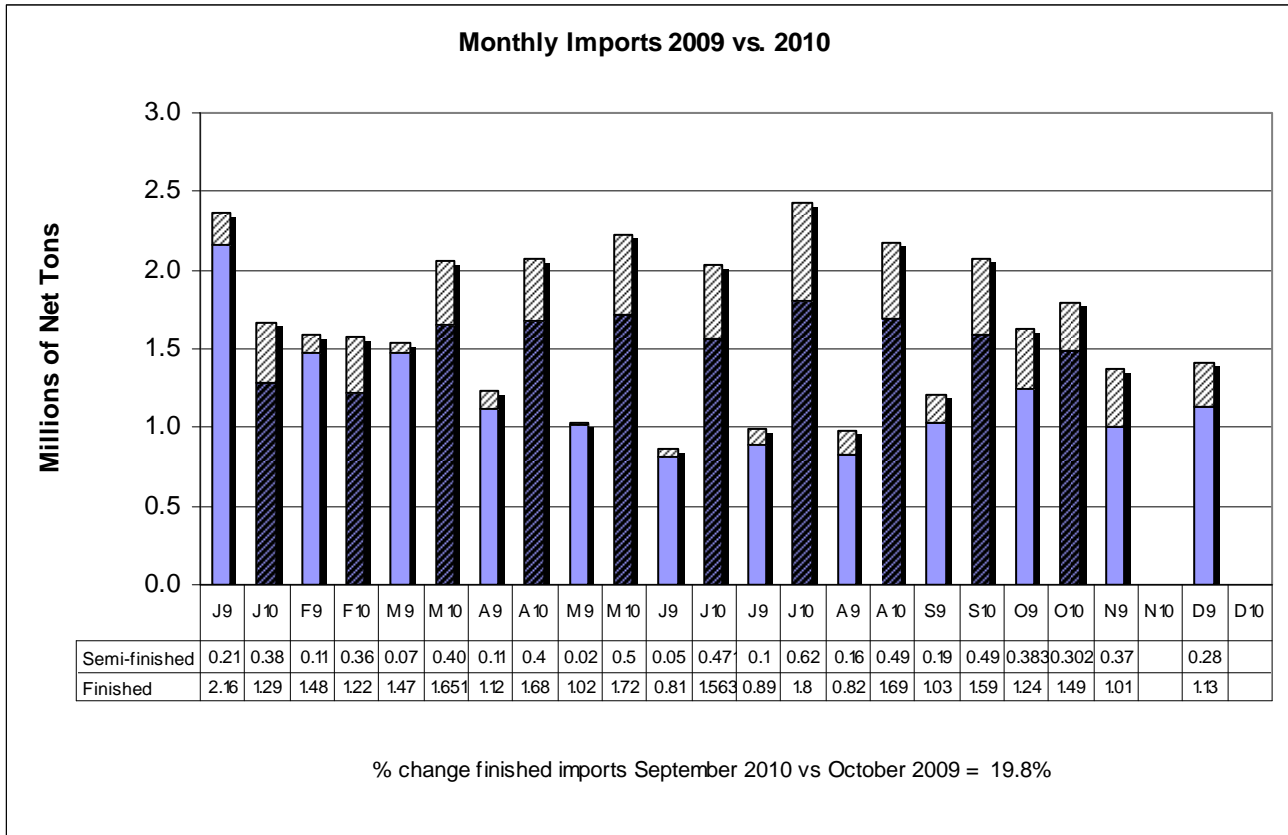
<b>Product</b>	<b>Preliminary 3 Mos. Rolling Avg. Oct. 10 - Aug. 10</b>	<b>Actual 3 Mos. Prior Jul. 10 - May. 10</b>	<b>Current 3 Months vs 3 Months Prior % Change</b>
Oil Country Goods	232	236	-1.6%
Sheets Hot Rolled	186	212	-12.3%
Sheets & Strip Galv HD	118	137	-13.9%
Line Pipe	110	138	-20.3%
Sheets Cold Rolled	103	101	2.1%
Wire Rods	99	126	-21.2%
Bars - Hot Rolled	93	88	5.5%
Plates in Coils	80	104	-22.9%
Standard Pipe	74	66	11.1%
Wire Drawn	56	56	1.5%
All Other	438	456	-4.1%
<b>Total</b>	<b>1,588</b>	<b>1,719</b>	<b>-7.7%</b>

**U.S. IMPORTS OF FINISHED STEEL MILL PRODUCTS  
3 MONTHS ROLLING AVERAGE  
(thousands of net tons)**

<b>Country</b>	<b>Preliminary 3 Mos. Rolling Avg. Oct. 10 - Aug. 10</b>	<b>Actual 3 Mos. Prior Jul. 10 - May. 10</b>	<b>Current 3 Months vs 3 Months Prior % Change</b>
South Korea	197	176	11.4%
Japan	119	107	10.6%
China	84	78	7.7%
Germany	68	83	-17.8%
Taiwan	56	42	34.4%
India	51	105	-51.7%
Turkey	50	56	-9.8%
All Other	963	1,072	-10.2%
<b>Total</b>	<b>1,588</b>	<b>1,719</b>	<b>-7.7%</b>

Source: U.S. Department of Commerce

-MORE



AISI serves as the voice of the North American steel industry in the public policy arena and advances the case for steel in the marketplace as the preferred material of choice. AISI also plays a lead role in the development and application of new steels and steelmaking technology. AISI is comprised of 24 member companies, including integrated and electric furnace steelmakers, and 140 associate and affiliate members who are suppliers to or customers of the steel industry. AISI's member companies represent approximately 80 percent of both U.S. and North American steel capacity. For more news about steel and its applications, view AISI's Web site at [www.steel.org](http://www.steel.org).

-#####-