



FOR IMMEDIATE RELEASE
December 22, 2009

CONTACT: NANCY GRAVATT
202.452.7115/ ngravatt@steel.org

Preliminary Steel Imports Decrease 19% in November
Steel Import Market Share at 22% through 11 Months

Washington, D.C. – Based on preliminary Census Bureau data, the American Iron and Steel Institute (AISI) reported today that the U.S. imported a total of 1,321,000 net tons (NT) of steel in November 2009, including 954,000 NT of finished steel (down 19% and 23%, respectively, vs. October final data). Annualized total and finished steel imports in 2009 would be 16.1 and 14.2 million NT, respectively, down 50 and 45% vs. 2008. Finished steel import market share was an estimated 15% in November and is an estimated 22% year-to-date (YTD) through eleven months.

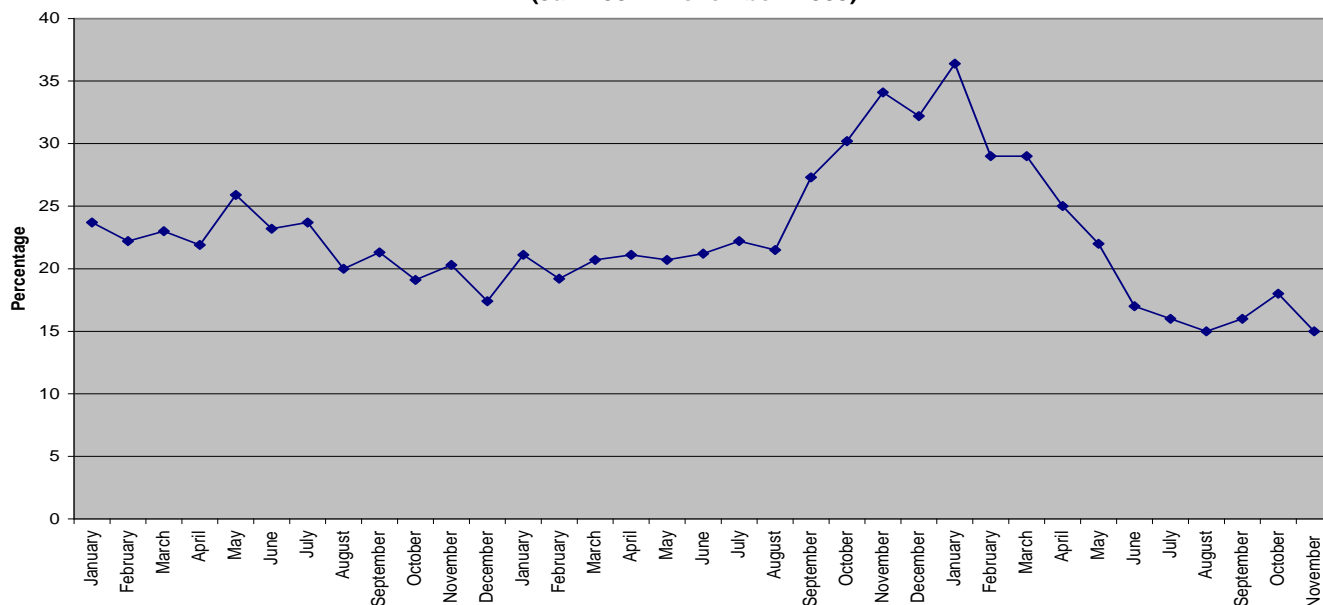
Key finished steel products with increases in November 2009 compared to October include tin plate (6%), standard pipe (5%) and hot rolled sheets (4%).

| Steel Mill Product | Nov. (prelim.) | Oct. final | % var Nov. vs. Oct. | (11 mo) YTD 2009 | (11 mo) YTD 2008 | % var 09 vs. '08 | 2009 Annualized | 2008 12 mo. | % var 2009 ann. vs 2008 12 mo. |
|------------------------------------|-------------------|------------------|---------------------------|------------------------|------------------------|------------------------|--------------------|-------------------|--------------------------------------|
| Ingots and Billets and Slabs | 361,502 | 380,784 | -5.1% | 1,738,012 | 5,729,368 | -69.7% | 1,896,014 | 5,943,024 | -68.1% |
| Sheets Hot Rolled | 191,716 | 184,409 | 4.0% | 1,574,071 | 2,616,413 | -39.8% | 1,717,169 | 2,769,854 | -38.0% |
| Oil Country Goods | 42,483 | 42,710 | -0.5% | 1,540,229 | 3,501,582 | -56.0% | 1,680,250 | 3,973,853 | -57.7% |
| Line Pipe | 97,894 | 130,410 | -24.9% | 1,477,496 | 2,996,336 | -50.7% | 1,611,814 | 3,223,302 | -50.0% |
| Sheets Cold Rolled | 89,991 | 96,029 | -6.3% | 1,022,694 | 1,361,858 | -24.9% | 1,115,666 | 1,439,007 | -22.5% |
| Sheets & Strip Galv Hot Dipped | 69,751 | 91,267 | -23.6% | 948,466 | 1,698,073 | -44.1% | 1,034,690 | 1,821,926 | -43.2% |
| Plates in Coils | 33,301 | 82,895 | -59.8% | 662,686 | 1,159,384 | -42.8% | 722,931 | 1,213,063 | -40.4% |
| Wire Rods | 64,154 | 124,312 | -48.4% | 660,600 | 1,125,509 | -41.3% | 720,655 | 1,229,419 | -41.4% |
| Bars - Hot Rolled | 61,045 | 71,986 | -15.2% | 588,641 | 1,402,801 | -58.0% | 642,154 | 1,486,987 | -56.8% |
| Standard Pipe | 38,729 | 36,786 | 5.3% | 545,471 | 1,078,410 | -49.4% | 595,060 | 1,180,409 | -49.6% |
| Plates Cut Lengths | 30,264 | 46,573 | -35.0% | 486,143 | 1,155,105 | -57.9% | 530,338 | 1,237,098 | -57.1% |
| Wire Drawn | 45,911 | 54,653 | -16.0% | 440,042 | 670,896 | -34.4% | 480,046 | 709,194 | -32.3% |
| Bars - Reinforcing | 7,857 | 33,096 | -76.3% | 397,559 | 957,040 | -58.5% | 433,700 | 970,762 | -55.3% |
| Structural Shapes Heavy | 16,785 | 37,564 | -55.3% | 348,697 | 681,582 | -48.8% | 380,396 | 721,884 | -47.3% |
| Mechanical Tubing | 17,810 | 19,885 | -10.4% | 311,985 | 551,025 | -43.4% | 340,348 | 606,933 | -43.9% |
| Tin Plate | 32,007 | 30,148 | 6.2% | 290,060 | 296,592 | -2.2% | 316,429 | 321,077 | -1.4% |
| Sheets & Strip All Other Met. Ctd. | 22,610 | 19,995 | 13.1% | 270,563 | 481,956 | -43.9% | 295,159 | 502,210 | -41.2% |
| All Other | 97,069 | 142,442 | -31.9% | 1,445,295 | 2,396,352 | -39.7% | 1,576,686 | 2,576,848 | -38.8% |
| TOTAL | 1,320,879 | 1,625,944 | -18.8% | 14,748,710 | 29,860,282 | -50.6% | 16,089,505 | 31,926,850 | -49.6% |
| SUBTOTAL Finished Imports | 954,098 | 1,243,311 | -23.3% | 12,990,966 | 24,105,520 | -46.1% | 14,171,962 | 25,955,963 | -45.4% |

-MORE-

In November, the largest volumes of finished steel imports from offshore were from South Korea (105,000 NT, down 6%), China (61,000 NT, up 10%), The Netherlands (60,000 NT, down 39%), Japan (55,000 NT, down 40%) and Brazil (49,000 NT, up 170%). Based on the first 11 months of 2009, finished steel imports from China would annualize at 1.5 million NT, 68% less than in 2008 but more than any other offshore supplier. Below are charts on estimated steel import market share by month and finished steel imports by country.

**Estimated Steel Import Market Share By Month
(Jan 2007 - November 2009)**



**U.S. IMPORTS OF FINISHED STEEL MILL PRODUCTS
BY COUNTRY OF ORIGIN
(thousands of net tons)**

| COUNTRY | Nov. 2009 | Oct. 2009 | Nov. 2008 | % incr. Nov. vs Oct. | (11 mo) YTD 2009 | (11 mo) YTD 2008 | % incr. '09 YTD vs. '08 | 2009 full year (est.) | 2008 Annual | % incr. 2009 an. vs. '08 |
|--------------|------------|--------------|--------------|----------------------|------------------|------------------|-------------------------|-----------------------|---------------|--------------------------|
| South Korea | 105 | 112 | 232 | -6.3% | 1,218 | 2,193 | -44.4% | 1,329 | 2,305 | -42.3% |
| China | 61 | 55 | 602 | 10.1% | 1,416 | 4,335 | -67.3% | 1,544 | 4,821 | -68.0% |
| Netherlands | 60 | 99 | 62 | -39.1% | 346 | 462 | -25.2% | 377 | 474 | -20.5% |
| Japan | 55 | 91 | 148 | -40.1% | 877 | 1,499 | -41.5% | 957 | 1,614 | -40.7% |
| Brazil | 49 | 18 | 32 | 169.5% | 364 | 409 | -11.0% | 397 | 436 | -8.9% |
| Germany | 31 | 45 | 73 | -31.9% | 451 | 1,039 | -56.6% | 492 | 1,122 | -56.1% |
| Italy | 30 | 48 | 15 | -37.4% | 260 | 317 | -18.1% | 283 | 336 | -15.7% |
| India | 19 | 52 | 58 | -63.5% | 541 | 979 | -44.7% | 590 | 1,102 | -46.5% |
| All Other | 544 | 722 | 998 | -24.6% | 7,518 | 12,873 | -41.6% | 8,202 | 13,746 | -40.3% |
| Total | 954 | 1,243 | 2,221 | -23.3% | 12,991 | 24,106 | -46.1% | 14,172 | 25,956 | -45.4% |

-MORE

**U.S. IMPORTS OF FINISHED STEEL MILL PRODUCTS
3 MONTHS ROLLING AVERAGE
(thousands of net tons)**

| Product | Preliminary 3 Mos. Rolling Avg. Nov. 09 - Sep. 09 | Actual 3 Mos. Prior Aug. 09 - Jun. 09 | Current 3 Months vs 3 Months Prior % Change |
|--------------------------------|--|--|--|
| Sheets Hot Rolled | 180 | 103 | 74.1% |
| Line Pipe | 107 | 92 | 16.9% |
| Sheets Cold Rolled | 94 | 69 | 37.6% |
| Wire Rods | 89 | 54 | 64.7% |
| Sheets & Strip Galv Hot Dipped | 82 | 61 | 34.3% |
| Bars - Hot Rolled | 61 | 36 | 70.2% |
| Plates in Coils | 60 | 50 | 19.4% |
| Wire Drawn | 47 | 39 | 20.1% |
| Plates Cut Lengths | 40 | 27 | 46.7% |
| Oil Country Goods | 39 | 32 | 21.0% |
| All Other | 275 | 276 | -0.4% |
| Total | 1,075 | 840 | 28.0% |

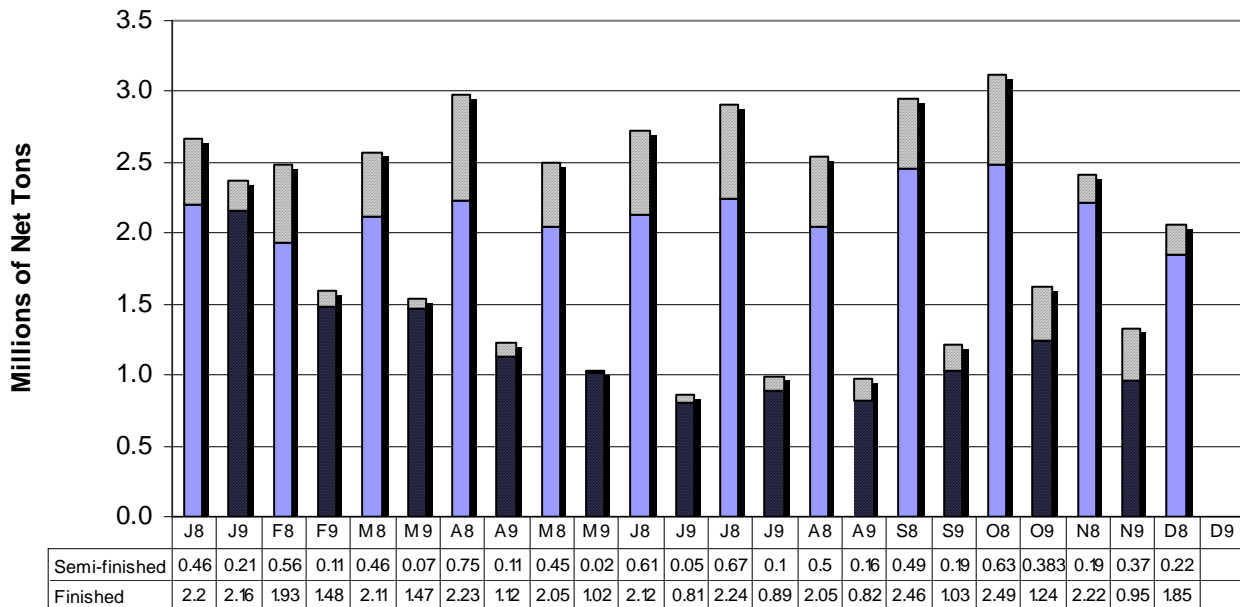
**U.S. IMPORTS OF FINISHED STEEL MILL PRODUCTS
3 MONTHS ROLLING AVERAGE
(thousands of net tons)**

| Country | Preliminary 3 Mos. Rolling Avg. Nov. 09 - Sep. 09 | Actual 3 Mos. Prior Aug. 09 - Jun. 09 | Current 3 Months vs 3 Months Prior % Change |
|-----------------|--|--|--|
| South Korea | 94 | 67 | 39.8% |
| Japan | 66 | 60 | 9.9% |
| The Netherlands | 61 | 23 | 167.8% |
| China | 53 | 35 | 50.2% |
| Italy | 39 | 19 | 102.2% |
| Australia | 37 | 12 | 222.3% |
| India | 37 | 28 | 30.3% |
| Brazil | 37 | 19 | 90.6% |
| Germany | 36 | 27 | 33.5% |
| Turkey | 27 | 16 | 66.8% |
| All Other | 589 | 534 | 10.3% |
| Total | 1,075 | 840 | 27.9% |

Source: U.S. Department of Commerce

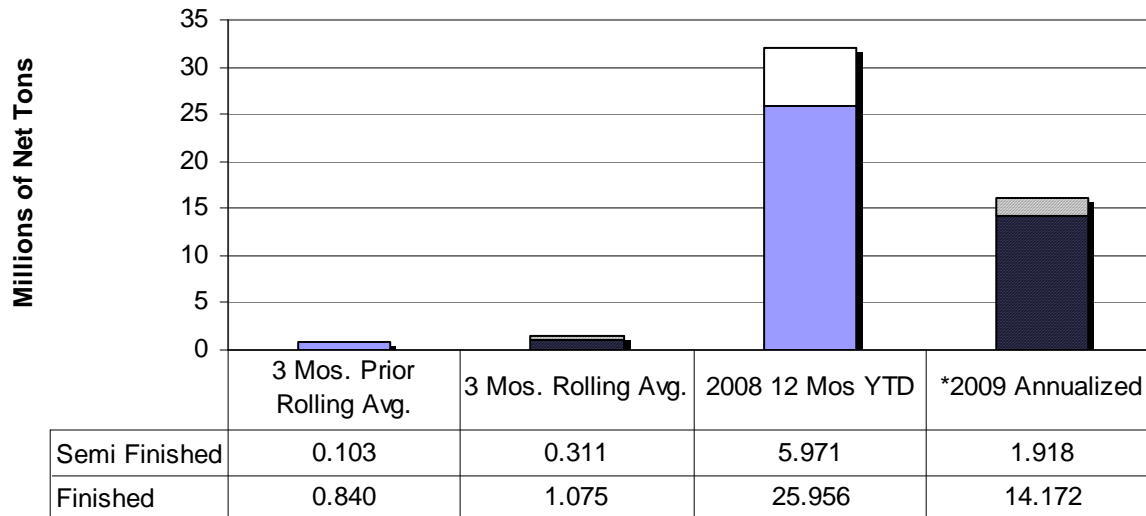
-MORE-

Monthly Imports 2008 vs. 2009



% change finished imports November 2009 vs November 2008 = -57.1%

3 Month Rolling Averages and YTD 2009 vs. 2008



% change finished imports 3 Mos. Rolling Avg. vs. 3 Mos. Prior = 27.9%

% change semi-finished imports 2009 vs 2008 = -67.9%

% change finished imports 2009 vs 2008 = -45.4%

*preliminary

AISI serves as the voice of the North American steel industry in the public policy arena and advances the case for steel in the marketplace as the preferred material of choice. AISI also plays a lead role in the development and application of new steels and steelmaking technology. AISI is comprised of 24 member companies, including integrated and electric furnace steelmakers, and 138 associate and affiliate members who are suppliers to or customers of the steel industry. AISI's member companies represent approximately 75 percent of both U.S. and North American steel capacity. For more news about steel and its applications, view AISI's Web site at www.steel.org.

-###-