



FOR IMMEDIATE RELEASE
October 27, 2009

CONTACT: NANCY GRAVATT
202.452.7115/ ngravatt@steel.org

Preliminary Steel Imports Increase 23% in September
Steel Import Market Share at 23% through Nine Months

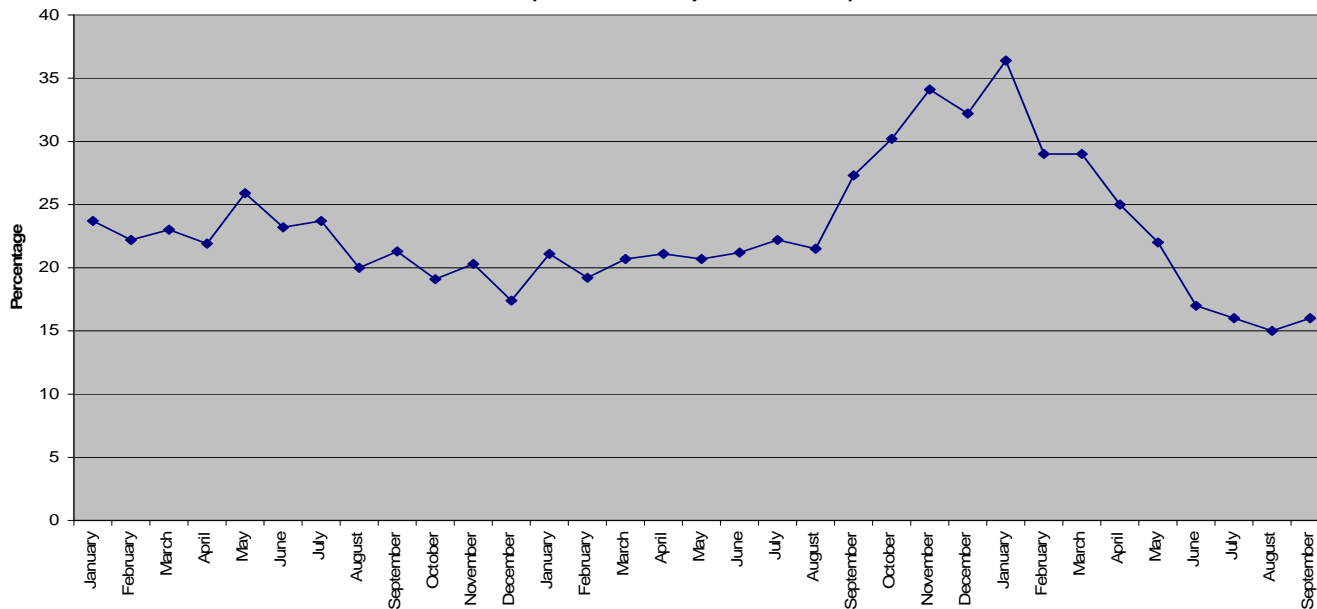
Washington, D.C. – Based on preliminary Census Bureau data, the American Iron and Steel Institute (AISI) reported today that the U.S. imported a total of 1,204,000 net tons (NT) of steel in September 2009, including 1,024,000 NT of finished steel (up 23% and 25%, respectively, vs. August final data). These were the highest monthly import figures since April. Total and finished steel imports on an annualized basis are down 51% and 45%, respectively, vs. 2008. Annualized total imports of steel in 2009 would be 15.7 million NT. Finished steel import market share, which was an estimated 16% in September and year-to-date (YTD) through nine months is an estimated 23%.

Key finished steel products with increases in September 2009 compared to August include line pipe (99%), oil country goods (76%), cut length plates (52%), heavy structural shapes (45%), hot dipped galvanized sheets (43%) and hot rolled sheets (22%).

Steel Mill Product	Sept. (prelim.)	Aug. final	% var Sep. vs. Aug.	(9 mo) YTD 2009	(9 mo) YTD 2008	% var 09 vs. '08	2009 Annualized	2008 12 mo.	% var 2009 ann. vs 2008 12 mo.
Oil Country Goods	32,297	18,342	76.1%	1,454,531	2,402,531	-39.5%	1,939,375	3,973,853	-51.2%
Line Pipe	93,512	46,995	99.0%	1,249,167	2,456,337	-49.1%	1,665,556	3,223,302	-48.3%
Sheets Hot Rolled	163,868	134,471	21.9%	1,197,852	2,221,784	-46.1%	1,597,136	2,769,854	-42.3%
Billets and Slabs	179,498	154,364	16.3%	990,467	4,920,951	-79.9%	1,320,622	5,943,024	-77.8%
Cold Rolled Sheets	97,107	80,865	20.1%	836,594	1,123,050	-25.5%	1,115,459	1,439,007	-22.5%
Sheets & Strip Galv Hot Dipped	84,076	58,964	42.6%	787,445	1,404,548	-43.9%	1,049,927	1,821,926	-42.4%
Plates in Coils	63,960	63,045	1.5%	546,516	849,318	-35.7%	728,688	1,213,063	-39.9%
Wire Rods	78,733	76,585	2.8%	472,134	897,463	-47.4%	629,512	1,229,419	-48.8%
Standard Pipe	38,763	38,161	1.6%	469,949	874,500	-46.3%	626,598	1,180,409	-46.9%
Bars - Hot Rolled	50,124	36,366	37.8%	455,598	1,104,991	-58.8%	607,464	1,486,987	-59.1%
Plates Cut Lengths	41,840	27,477	52.3%	409,178	918,377	-55.4%	545,571	1,237,098	-55.9%
Bars - Reinforcing	16,108	23,629	-31.8%	356,606	894,126	-60.1%	475,474	970,762	-51.0%
Wire Drawn	40,573	40,457	0.3%	339,387	577,202	-41.2%	452,516	709,194	-36.2%
Structural Shapes Heavy	26,918	18,517	45.4%	294,340	619,549	-52.5%	392,453	721,884	-45.6%
Mechanical Tubing	23,704	18,735	26.5%	273,915	445,012	-38.4%	365,220	606,933	-39.8%
Tin Plate	25,321	23,271	8.8%	227,822	225,374	1.1%	303,763	321,077	-5.4%
Sheets & Strip All Other Metal CTD.	29,426	19,886	48.0%	227,726	391,697	-41.9%	303,634	502,210	-39.5%
ALL OTHER	118,055	94,994	24.3%	1,205,095	2,008,330	-40.0%	1,606,793	2,576,849	-37.6%
TOTAL	1,203,881	975,125	23.5%	11,794,323	24,335,138	-51.5%	15,725,763	31,926,850	-50.7%
SUBTOTAL Finished Imports	1,023,827	819,609	24.9%	10,791,251	19,394,580	-44.4%	14,388,334	25,955,963	-44.6%

In September, the largest volumes of finished steel imports from offshore were from South Korea (64,000 NT, down 26%), Japan (51,000 NT, up 51%), Brazil (43,000 NT, up 17%), Taiwan (42,000 NT, up 171%) and China (42,000 NT, up 33%). Based on the first nine months of 2009, finished imports from China would annualize at 1.7 million NT, which would be 64% less than in 2008 but above any other offshore supplier. Below are charts on estimated steel import market share by month and finished steel imports by country.

**Estimated Steel Import Market Share By Month
(Jan 2007 - September 2009)**



**U.S. IMPORTS OF FINISHED STEEL MILL PRODUCTS
BY COUNTRY OF ORIGIN
(thousands of net tons)**

COUNTRY	Sep. 2009	Aug. 2009	Sep. 2008	% incr. Sep. vs Aug.	(9 mo) YTD 2009	(9 mo) YTD 2008	% incr. '09 YTD vs. '08	2009 full year (est.)	2008 Annual	% incr. 2009 an. vs. '08
South Korea	64	86	246	-25.6%	1,001	1,792	-44.2%	1,334	2,305	-42.1%
Japan	51	34	126	51.2%	731	1,217	-40.0%	975	1,614	-39.6%
Brazil	43	37	32	17.0%	296	334	-11.3%	395	436	-9.3%
Taiwan	42	16	70	170.6%	312	522	-40.2%	416	662	-37.2%
China	42	31	568	33.2%	1,300	3,005	-56.8%	1,733	4,821	-64.1%
India	39	9	159	359.5%	470	849	-44.7%	627	1,102	-43.2%
Italy	39	27	15	43.3%	182	283	-35.6%	243	336	-27.6%
Germany	31	22	92	37.9%	374	878	-57.4%	499	1,122	-55.5%
All Other	672	557	1,148	20.6%	6,125	10,513	-41.7%	8,167	13,559	-39.8%
Total	1,024	820	2,455	24.9%	10,791	19,395	-44.4%	14,388	25,956	-44.6%

-MORE

**U.S. IMPORTS OF FINISHED STEEL MILL PRODUCTS
3 MONTHS ROLLING AVERAGE
(thousands of net tons)**

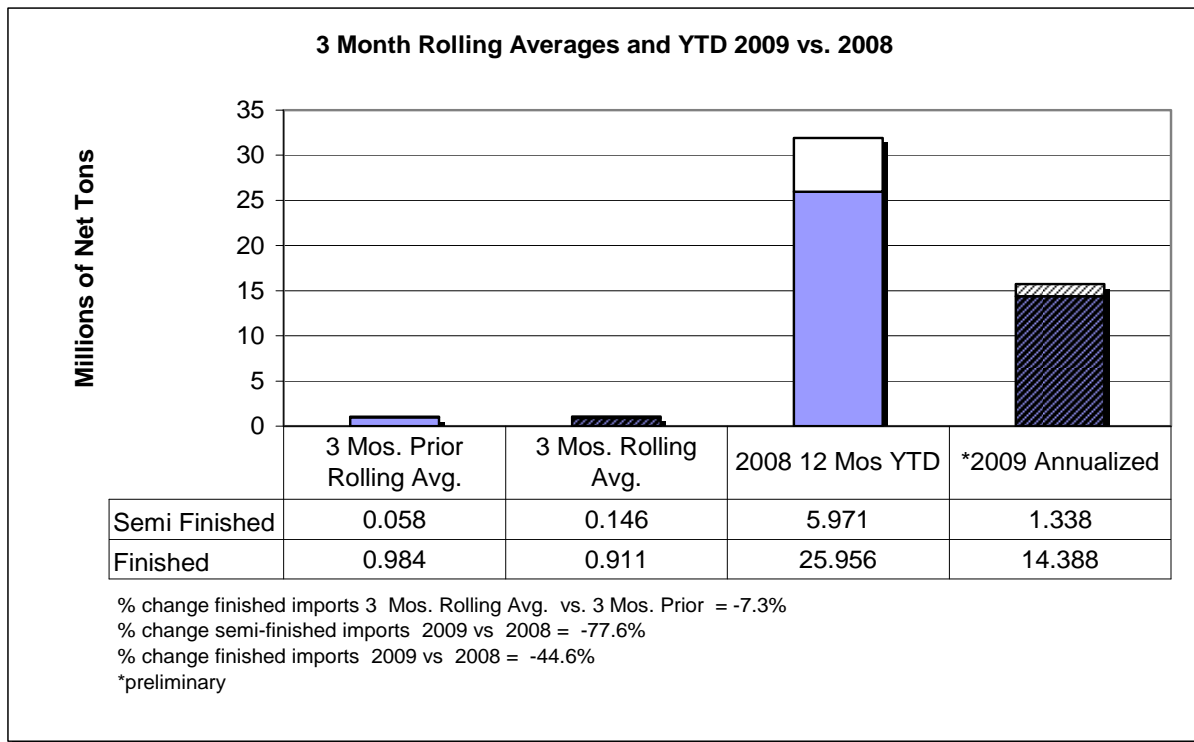
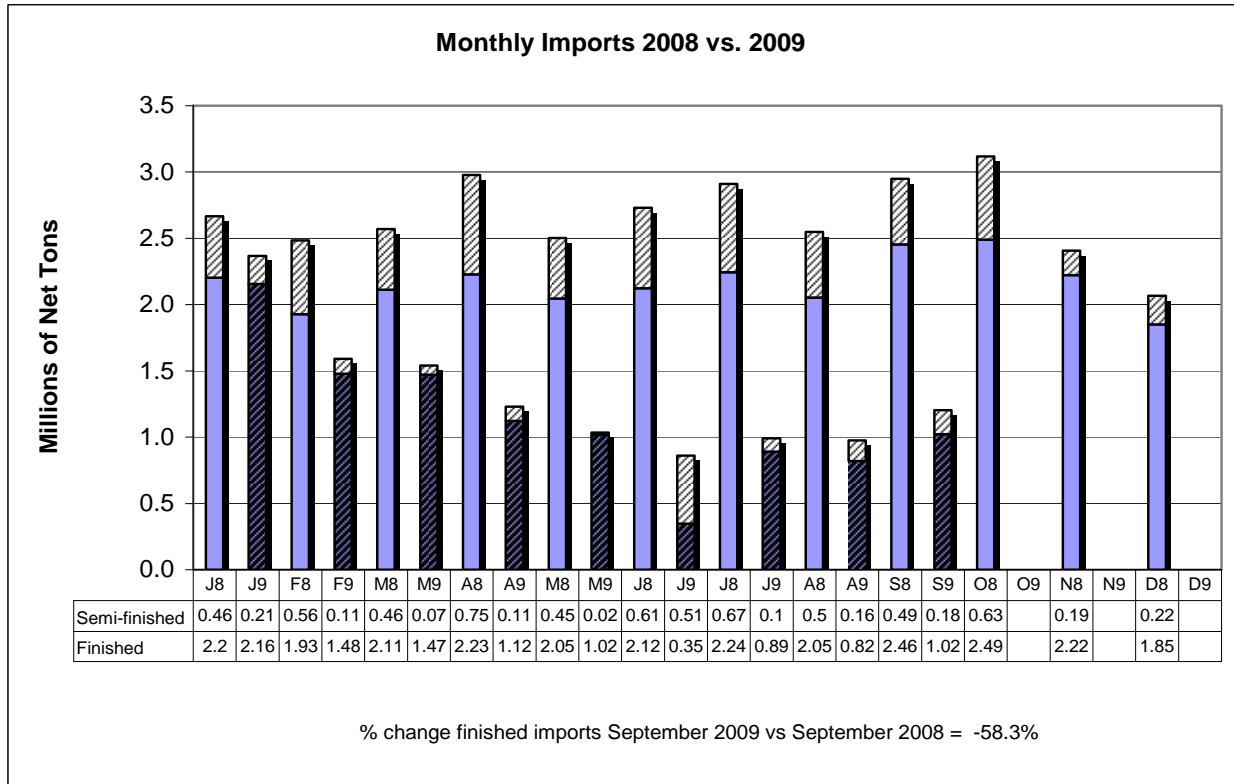
Product	Preliminary 3 Mos. Rolling Avg. Sep. 09 - Jul. 09	Actual 3 Mos. Prior Jun. 09 - Apr. 09	Current 3 Months vs 3 Months Prior % Change
Sheets Hot Rolled	130	110	18.7%
Line Pipe	86	128	-33.2%
Sheets Cold Rolled	79	84	-5.5%
Sheets & Strip Galv Hot Dipped	70	86	-18.5%
Wire Rods	64	36	79.8%
Plates in Coils	61	46	31.2%
Bars - Hot Rolled	42	36	15.9%
Standard Pipe	41	41	-0.5%
Wire Drawn	40	36	11.7%
Plates Cut Lengths	32	28	12.3%
All Other	266	352	-24.4%
Total	911	984	-7.3%

**U.S. IMPORTS OF FINISHED STEEL MILL PRODUCTS
3 MONTHS ROLLING AVERAGE
(thousands of net tons)**

Country	Preliminary 3 Mos. Rolling Avg. Sep. 09 - Jul. 09	Actual 3 Mos. Prior Jun. 09 - Apr. 09	Current 3 Months vs 3 Months Prior % Change
South Korea	75	76	-1.2%
Japan	57	68	-15.9%
China	34	98	-65.1%
India	30	47	-35.1%
Brazil	29	21	42.0%
Taiwan	28	26	5.8%
Italy	26	15	70.7%
Germany	26	35	-24.8%
Netherlands	24	27	-12.3%
Australia	23	13	80.3%
All Other	558	558	0.0%
Total	911	984	-7.3%

Source: U.S. Department of Commerce

-MORE-



AISI serves as the voice of the North American steel industry in the public policy arena and advances the case for steel in the marketplace as the preferred material of choice. AISI also plays a lead role in the development and application of new steels and steelmaking technology. AISI is comprised of 24 member companies, including integrated and electric furnace steelmakers, and 138 associate and affiliate members who are suppliers to or customers of the steel industry. AISI's member companies represent approximately 75 percent of both U.S. and North American steel capacity. For more news about steel and its applications, view AISI's Web site at www.steel.org.

-###-