



**FOR IMMEDIATE RELEASE**  
February 23, 2011

**CONTACT: NANCY GRAVATT**  
202.452.7115/ [ngravatt@steel.org](mailto:ngravatt@steel.org)

**Finished Steel Imports Rise by 8% in January**  
Import Market Share at 21%

**Washington, D.C.** – Based on preliminary Census Bureau data, the American Iron and Steel Institute (AISI) reported today that the U.S. imported a total of 2,048,000 net tons (NT) of steel in January, including 1,632,000 NT of finished steel (up 10% and 8%, respectively, from December final data). Annualized total and finished steel imports in 2011 would be 24.6 and 19.6 million NT, up 3% and 4%, respectively, vs. 2010. Finished steel import market share in January was an estimated 21% (same as in full-year 2010), up from 20% in December.

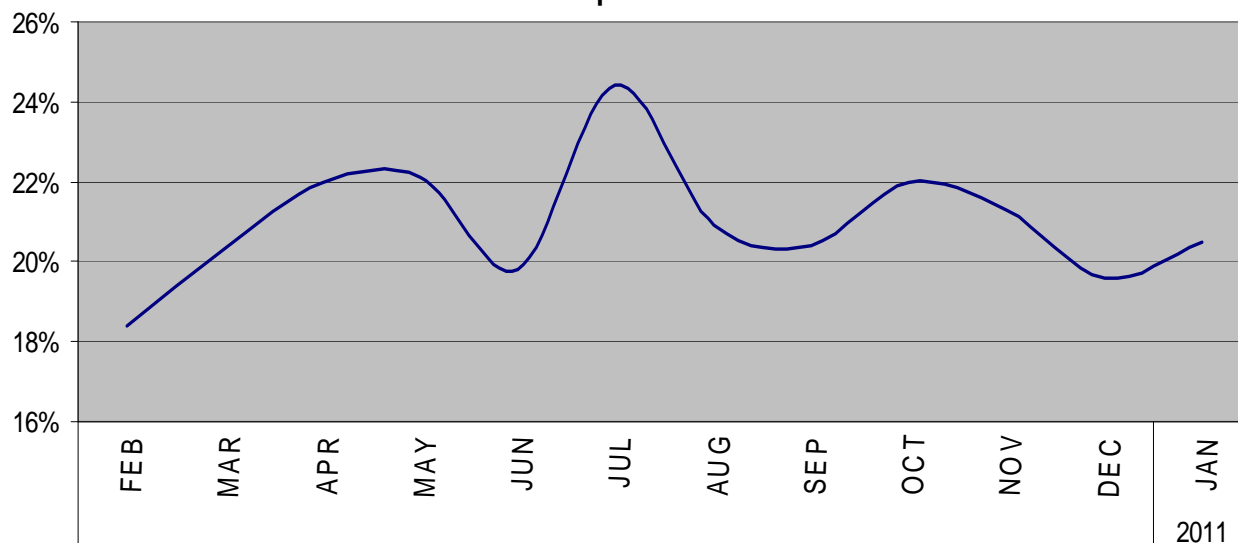
Key finished steel products with significant import increases in January 2011 compared to December are reinforcing bar (up 44%), wire rod (up 34%) and a variety of tubular products -- including standard pipe, line pipe and oil country goods ( up 38, 34 and 24 percent, respectively).

Steel Mill Product	Jan. (prelim)	Dec. final	% var Jan. vs. Dec.	(1 mo) YTD 2011	(1 mo) YTD 2010	% var '11 vs. '10	2011 Annualized	2010 12 mo.	% var 2011 ann. vs 2010 12 mo.
Ingots and Billets and Slabs	413,348	361,861	14.2%	413,348	375,231	10.2%	4,960,182	5,005,064	-0.9%
Sheets Hot Rolled	220,065	216,957	1.4%	220,065	169,060	30.2%	2,640,779	2,397,458	10.1%
Oil Country Goods	211,476	170,544	24.0%	211,476	121,663	73.8%	2,537,713	2,384,004	6.4%
Line Pipe	121,731	90,750	34.1%	121,731	135,122	-9.9%	1,460,770	1,490,643	-2.0%
Wire Rods	107,590	80,433	33.8%	107,590	87,484	23.0%	1,291,085	1,317,772	-2.0%
Bars - Hot Rolled	106,976	97,493	9.7%	106,976	84,405	26.7%	1,283,715	1,049,046	22.4%
Sheets & Strip Galv Hot	98,080	83,068	18.1%	98,080	101,085	-3.0%	1,176,959	1,420,686	-17.2%
Sheets Cold Rolled	94,846	115,348	-17.8%	94,846	94,182	0.7%	1,138,153	1,221,365	-6.8%
Standard Pipe	76,651	55,499	38.1%	76,651	60,095	27.5%	919,813	777,599	18.3%
Plates Cut Lengths	68,480	74,140	-7.6%	68,480	39,287	74.3%	821,764	749,357	9.7%
Plates in Coils	64,166	91,813	-30.1%	64,166	58,459	9.8%	769,995	1,022,372	-24.7%
Wire Drawn	51,997	47,224	10.1%	51,997	46,734	11.3%	623,962	631,547	-1.2%
Bars - Reinforcing	51,036	35,560	43.5%	51,036	24,359	109.5%	612,431	516,678	18.5%
Mechanical Tubing	49,875	41,353	20.6%	49,875	23,993	107.9%	598,495	425,779	40.6%
Structural Shapes Heavy	36,765	41,958	-12.4%	36,765	31,864	15.4%	441,182	522,001	-15.5%
Tin Plate	35,635	61,039	-41.6%	35,635	33,090	7.7%	427,615	506,437	-15.6%
Sheets & Strip All Other	34,489	22,437	53.7%	34,489	33,380	3.3%	413,872	413,537	0.1%
All Other	205,206	184,041	11.5%	205,206	142,607	43.9%	2,462,456	2,077,806	18.5%
<b>TOTAL</b>	<b>2,048,412</b>	<b>1,871,518</b>	<b>9.5%</b>	<b>2,048,412</b>	<b>1,662,100</b>	<b>23.2%</b>	<b>24,580,941</b>	<b>23,929,151</b>	<b>2.7%</b>
<b>SUBTOTAL Finished Imports</b>	<b>1,631,768</b>	<b>1,504,929</b>	<b>8.4%</b>	<b>1,631,768</b>	<b>1,285,143</b>	<b>27.0%</b>	<b>19,581,222</b>	<b>18,857,005</b>	<b>3.8%</b>

-MORE-

In January, the largest volumes of finished steel imports from offshore were from South Korea (213,000, up 9%), Japan (126,000 NT, up 23%), Germany (78,000 up 20%), Australia (74,000 NT, up 78%) and China (58,000, down 9%). Below are charts on estimated steel import market share in recent months and on finished steel imports from offshore by country.

**Estimated Finished Steel Import Market Share for the Past 12 Months**



**U.S. IMPORTS OF FINISHED STEEL MILL PRODUCTS  
BY COUNTRY OF ORIGIN  
(thousands of net tons)**

COUNTRY	Jan 2010	Dec 2010	% incr. Jan vs Dec.	(1 mo.) YTD 2011	(1 mo.) YTD 2010	% incr. '11 YTD vs. '10	2011 full year (est)	2010 Annual	%incr. 2011 an. vs. '10
South Korea	213	195	<b>9.3%</b>	213	151	<b>41.3%</b>	2,558	2,041	<b>25.4%</b>
Japan	126	102	<b>23.1%</b>	126	81	<b>56.0%</b>	1,509	1,325	<b>13.9%</b>
Germany	78	65	<b>19.7%</b>	78	38	<b>106.9%</b>	936	879	<b>6.5%</b>
Australia	74	42	<b>78.4%</b>	74	28	<b>168.9%</b>	892	519	<b>71.9%</b>
China	58	64	<b>-9.8%</b>	58	66	<b>-12.9%</b>	694	858	<b>-19.2%</b>
India	47	27	<b>78.7%</b>	47	34	<b>38.3%</b>	569	713	<b>-20.1%</b>
Taiwan	37	40	<b>-6.7%</b>	37	28	<b>31.3%</b>	445	536	<b>-16.9%</b>
All Other	998	971	<b>2.9%</b>	998	859	<b>16.2%</b>	11,977	11,986	<b>-0.1%</b>
Total	1,632	1,505	<b>8.4%</b>	1,632	1,285	<b>27.0%</b>	19,581	18,857	<b>3.8%</b>

**U.S. IMPORTS OF FINISHED STEEL MILL PRODUCTS  
3 MONTHS ROLLING AVERAGE  
(thousands of net tons)**

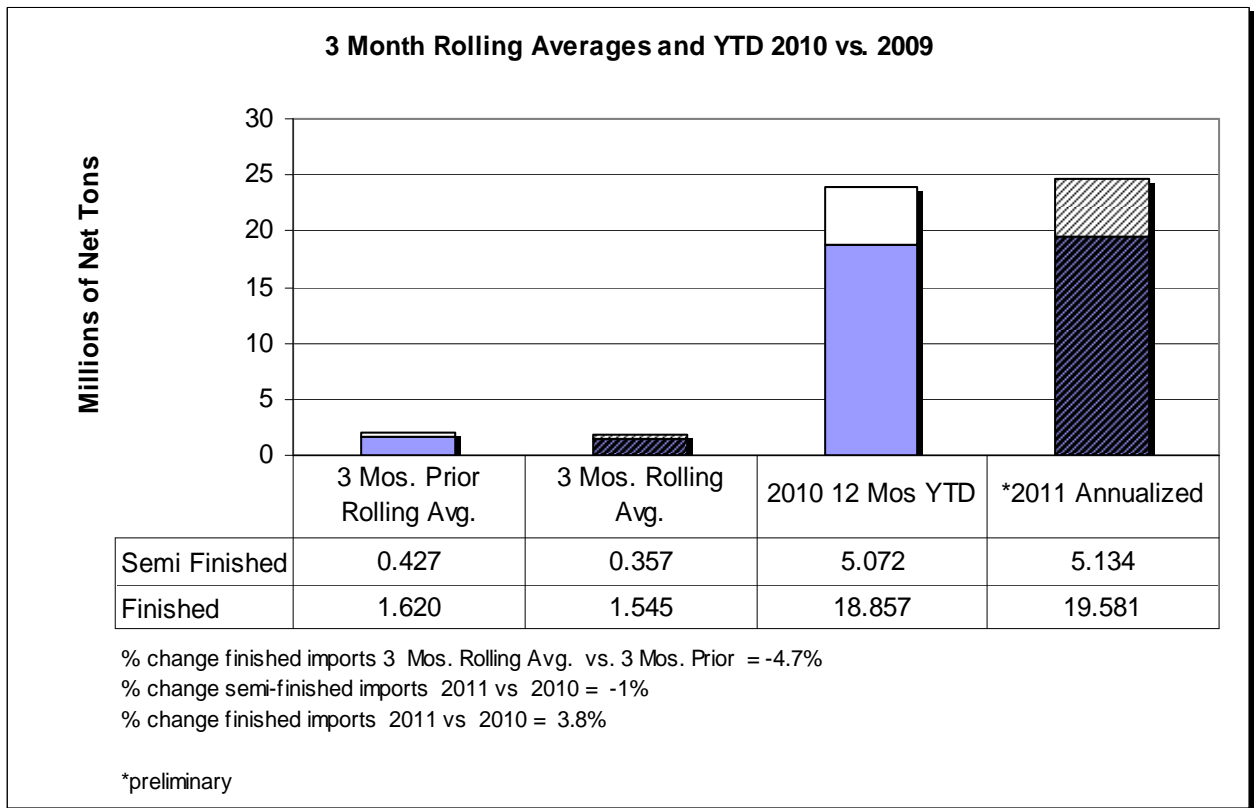
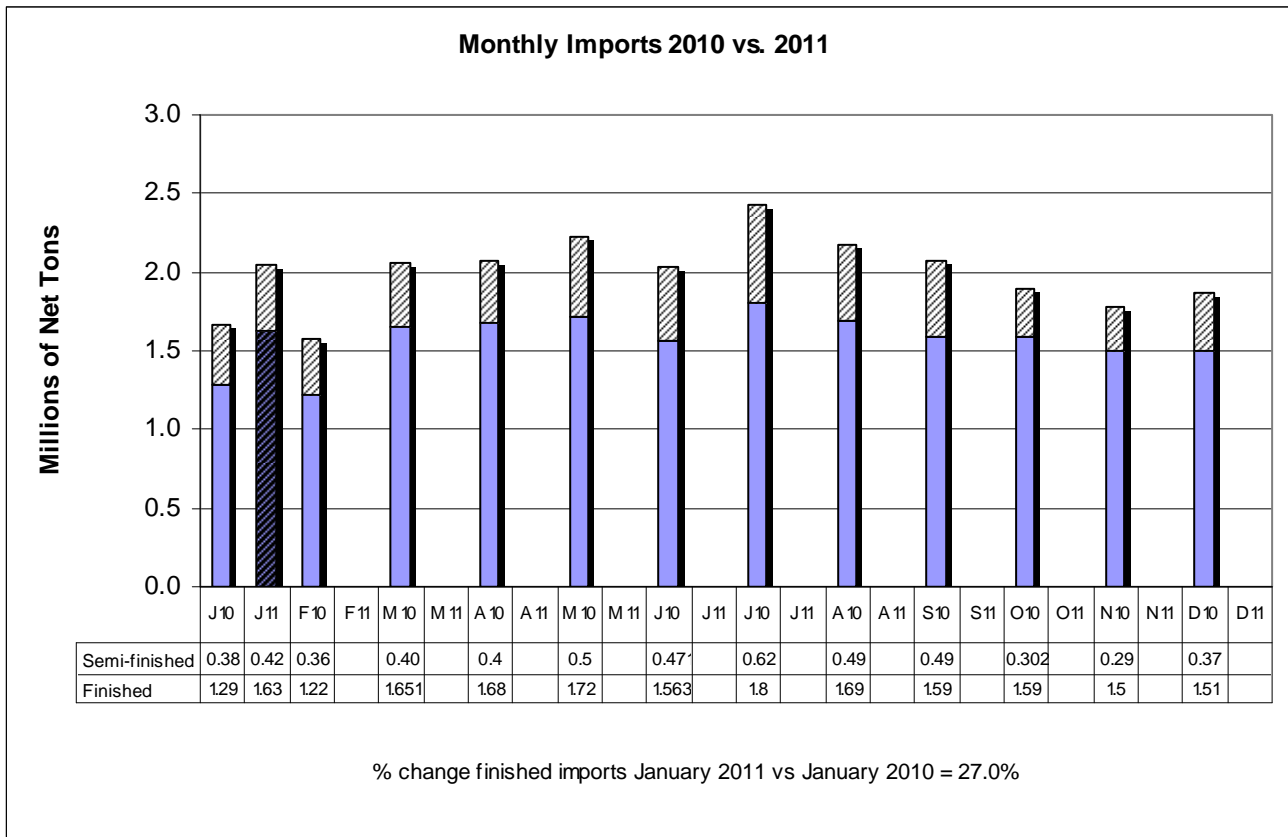
<b>Product</b>	<b>Preliminary 3 Mos. Rolling Avg. Jan. 11 - Nov. 10</b>	<b>Actual 3 Mos. Prior Oct. 10 - Aug. 10</b>	<b>Current 3 Months vs 3 Months Prior % Change</b>
Sheets Hot Rolled	216	188	14.6%
Oil Country Goods	200	246	-18.6%
Sheets Cold Rolled	108	105	3.3%
Line Pipe	97	111	-13.1%
Bars - Hot Rolled	94	93	1.2%
Wire Rods	94	101	-6.8%
Sheets & Strip Galv Hot Dipped	92	119	-22.5%
Plates in Coils	76	81	-6.1%
Standard Pipe	67	75	-10.2%
Plates Cut Lengths	65	57	14.6%
All Other	435	444	-2.1%
<b>Total</b>	<b>1,545</b>	<b>1,620</b>	<b>-4.7%</b>

**U.S. IMPORTS OF FINISHED STEEL MILL PRODUCTS  
3 MONTHS ROLLING AVERAGE  
(thousands of net tons)**

<b>Country</b>	<b>Preliminary 3 Mos. Rolling Avg. Jan. 11 - Nov. 10</b>	<b>Actual 3 Mos. Prior Oct. 10 - Aug. 10</b>	<b>Current 3 Months vs 3 Months Prior % Change</b>
South Korea	187	203	-7.7%
Japan	110	124	-11.3%
Germany	71	69	3.0%
China	64	86	-25.4%
Australia	58	25	137.4%
Netherlands	54	53	0.5%
Taiwan	43	57	-24.2%
India	40	52	-22.6%
Turkey	27	52	-47.8%
Brazil	27	26	2.4%
All Other	864	875	-1.3%
<b>Total</b>	<b>1,545</b>	<b>1,620</b>	<b>-4.7%</b>

Source: U.S. Department of Commerce

-MORE



AISI serves as the voice of the North American steel industry in the public policy arena and advances the case for steel in the marketplace as the preferred material of choice. AISI also plays a lead role in the development and application of new steels and steelmaking technology. AISI is comprised of 25 member companies, including integrated and electric furnace steelmakers, and 140 associate and affiliate members who are suppliers to or customers of the steel industry. AISI's member companies represent approximately 80 percent of both U.S. and North American steel capacity. For more news about steel and its applications, view AISI's Web site at [www.steel.org](http://www.steel.org).

-#####-