



FOR IMMEDIATE RELEASE
July 28, 2011

CONTACT: NANCY GRAVATT
202.452.7115/ ngravatt@steel.org

Preliminary Steel Finished Imports Increase 5% in June
Import Market Share at 24%

Washington, D.C. – Based on preliminary Census Bureau data, the American Iron and Steel Institute (AISI) reported today that the U.S. imported a total of 2,670,000 net tons (NT) of steel in June, including 2,110,000 NT of finished steel (down 10% and up 5%, respectively, from May final data). Annualized total and finished steel imports in 2011 would be 29.2 and 22.1 million NT, respectively, up 22% and 17% vs. 2010. Finished steel import market share in June was an estimated 24% and is 22% year-to date (YTD).

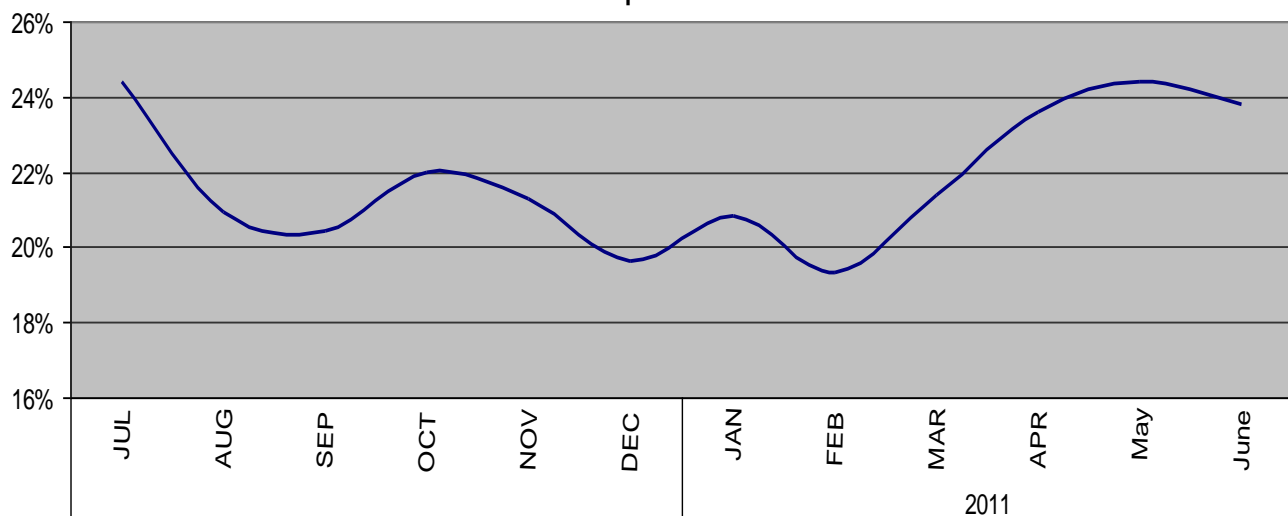
In commenting on the June 2011 preliminary steel finished imports data, Thomas J. Gibson, AISI president and CEO, stated that, “An import market share of 24 percent in the context of significant underutilized domestic steel capacity is substantial. There has also been a trend of rising finished steel imports from offshore -- especially Asia -- in recent months. These developments underscore the need for the U.S. government to vigorously enforce our laws against injurious dumped and subsidized imports.”

Key finished steel products with significant import increases in June 2011 compared to May include cut length plates (up 19%), line pipe (up 18%), heavy structural shapes (up 17%) and cold rolled sheets (up 17%). Major products with significant YTD import increases vs. the same period last year include reinforcing bar (up 55%), oil country goods (up 41%) and hot rolled bars (up 33%).

| Steel Mill Product | June (prelim.) | May final | % var June vs. May | (6 mo.) YTD 2011 | (6 mo.) YTD 2010 | % var '11 vs. 10 | 2011 Annualized | 2010 12 mo. | % var 2011 ann. vs 2010 12 mo. |
|----------------------------------|-------------------|------------------|--------------------------|------------------------|------------------------|------------------------|--------------------|-------------------|--------------------------------------|
| Ingot and Billets and Slabs | 554,066 | 945,031 | -41.4% | 3,520,022 | 2,468,172 | 42.6% | 7,040,045 | 5,005,064 | 40.7% |
| Oil Country Goods | 269,570 | 253,723 | 6.2% | 1,396,735 | 990,106 | 41.1% | 2,793,470 | 2,384,004 | 17.2% |
| Hot Rolled Sheets | 225,608 | 262,692 | -14.1% | 1,347,362 | 1,167,724 | 15.4% | 2,694,725 | 2,397,458 | 12.4% |
| Line Pipe | 216,268 | 183,839 | 17.6% | 1,001,885 | 816,869 | 22.6% | 2,003,771 | 1,490,643 | 34.4% |
| Cold Rolled Sheets | 133,799 | 114,641 | 16.7% | 719,400 | 572,514 | 25.7% | 1,438,800 | 1,221,365 | 17.8% |
| Sheets & Strip Galv Hot Dipped | 141,790 | 129,422 | 9.6% | 712,744 | 758,780 | -6.1% | 1,425,488 | 1,420,686 | 0.3% |
| Bars - Hot Rolled | 128,490 | 117,672 | 9.2% | 673,913 | 505,058 | 33.4% | 1,347,827 | 1,049,046 | 28.5% |
| Plates in Coils | 142,868 | 162,561 | -12.1% | 645,061 | 523,853 | 23.1% | 1,290,123 | 1,022,372 | 26.2% |
| Wire Rods | 120,117 | 119,822 | 0.2% | 595,583 | 717,321 | -17.0% | 1,191,166 | 1,317,772 | -9.6% |
| Plates Cut Lengths | 101,806 | 85,873 | 18.6% | 486,708 | 373,234 | 30.4% | 973,416 | 749,357 | 29.9% |
| Standard Pipe | 72,253 | 81,204 | -11.0% | 437,506 | 357,989 | 22.2% | 875,011 | 777,599 | 12.5% |
| Reinforcing Bar | 54,242 | 54,352 | -0.2% | 399,897 | 258,832 | 54.5% | 799,793 | 516,678 | 54.8% |
| Wire Drawn | 57,583 | 60,497 | -4.8% | 333,990 | 309,333 | 8.0% | 667,981 | 631,547 | 5.8% |
| Mechanical Tubing | 53,432 | 43,140 | 23.9% | 306,692 | 176,215 | 74.0% | 613,384 | 425,779 | 44.1% |
| Structural Shapes Heavy | 68,123 | 58,328 | 16.8% | 304,253 | 252,170 | 20.7% | 608,507 | 522,001 | 16.6% |
| Sheets & Strip All Other | 58,132 | 35,699 | 62.8% | 268,613 | 231,145 | 16.2% | 537,225 | 413,537 | 29.9% |
| Tin Plate | 33,961 | 32,853 | 3.4% | 198,673 | 220,747 | -10.0% | 397,346 | 506,437 | -21.5% |
| All Other | 237,986 | 222,627 | 6.9% | 1,260,869 | 1,005,868 | 25.4% | 2,521,735 | 2,077,806 | 21.4% |
| TOTAL | 2,670,094 | 2,963,976 | -9.9% | 14,609,906 | 11,705,930 | 24.8% | 29,219,813 | 23,929,151 | 22.1% |
| SUBTOTAL Finished Imports | 2,110,371 | 2,010,945 | 4.9% | 11,057,105 | 9,188,780 | 20.3% | 22,114,209 | 18,857,005 | 17.3% |

In June, the largest volumes of finished steel imports from offshore were from South Korea (301,000 NT, up 28%), China (161,000 NT, up 26%), Japan (123,000 NT, down 17%), Turkey (90,000 NT, no change) and Taiwan (75,000 NT, up 56%). For the first 6 months of 2011, the largest offshore suppliers were South Korea (1,488,000 NT, up 67%), Japan (756,000 NT, up 22%) and China (561,000 NT, up 50%). Below are charts on estimated steel import market share in recent months and on finished steel imports from offshore by country.

Estimated Finished Steel Import Market Share for the Past 12 Months



**U.S. IMPORTS OF FINISHED STEEL MILL PRODUCTS
BY COUNTRY OF ORIGIN
(thousands of net tons)**

| COUNTRY | June 2010 | May 2010 | % incr. June vs May | (6 mo.) YTD 2011 | (6 mo.) YTD 2010 | % incr. '11 YTD vs. '10 | 2011 full year (est.) | 2010 Annual | % incr. 2011 an. vs. '10 |
|--------------|--------------|--------------|---------------------|------------------|------------------|-------------------------|-----------------------|---------------|--------------------------|
| South Korea | 301 | 235 | 28.1% | 1,488 | 889 | 67.4% | 2,975 | 2,041 | 45.8% |
| Japan | 123 | 149 | -17.4% | 756 | 621 | 21.7% | 1,512 | 1,325 | 14.1% |
| China | 161 | 128 | 25.8% | 561 | 373 | 50.4% | 1,122 | 858 | 30.8% |
| Germany | 62 | 87 | -28.7% | 485 | 452 | 7.3% | 969 | 879 | 10.2% |
| Turkey | 90 | 90 | 0.0% | 452 | 319 | 41.7% | 904 | 582 | 55.3% |
| India | 47 | 72 | -34.7% | 367 | 340 | 7.9% | 733 | 713 | 2.8% |
| Taiwan | 75 | 48 | 56.3% | 348 | 248 | 40.3% | 697 | 536 | 30.0% |
| All Other | 1,251 | 1,202 | 4.1% | 6,600 | 5,947 | 11.0% | 13,202 | 11,923 | 10.7% |
| Total | 2,110 | 2,011 | 4.9% | 11,057 | 9,189 | 20.3% | 22,114 | 18,857 | 17.3% |

**U.S. IMPORTS OF FINISHED STEEL MILL PRODUCTS
3 MONTHS ROLLING AVERAGE
(thousands of net tons)**

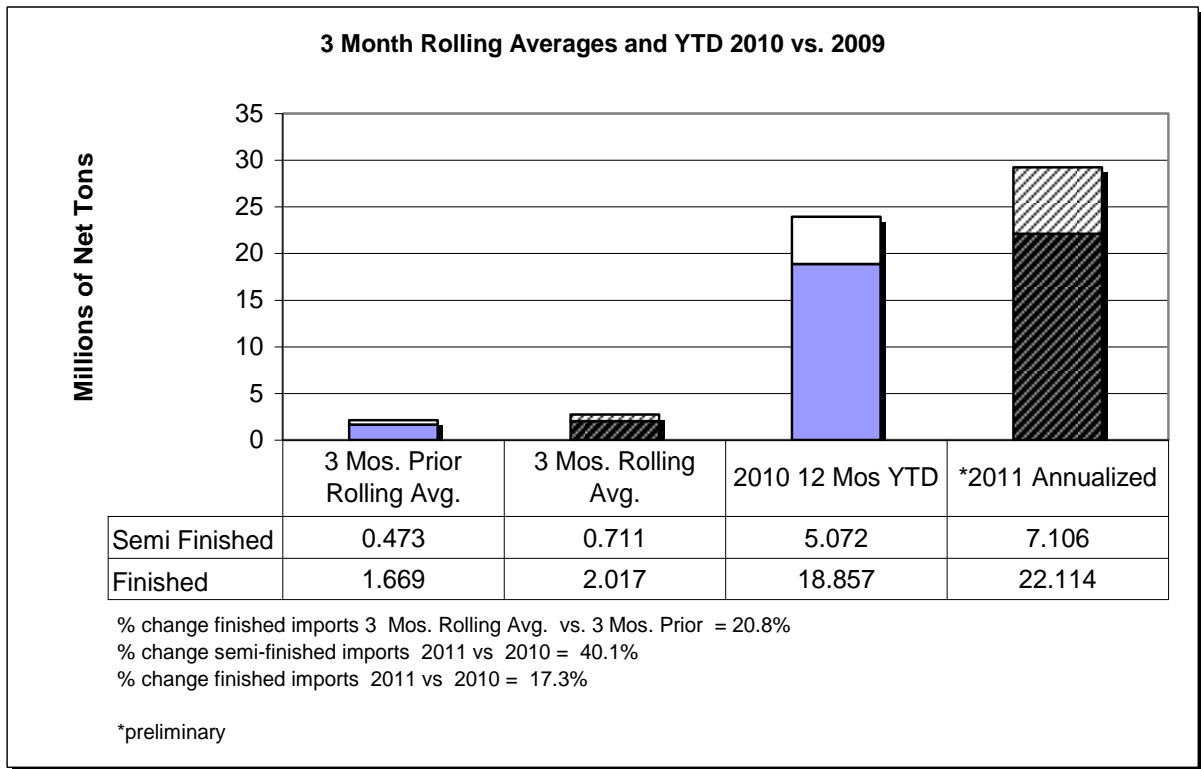
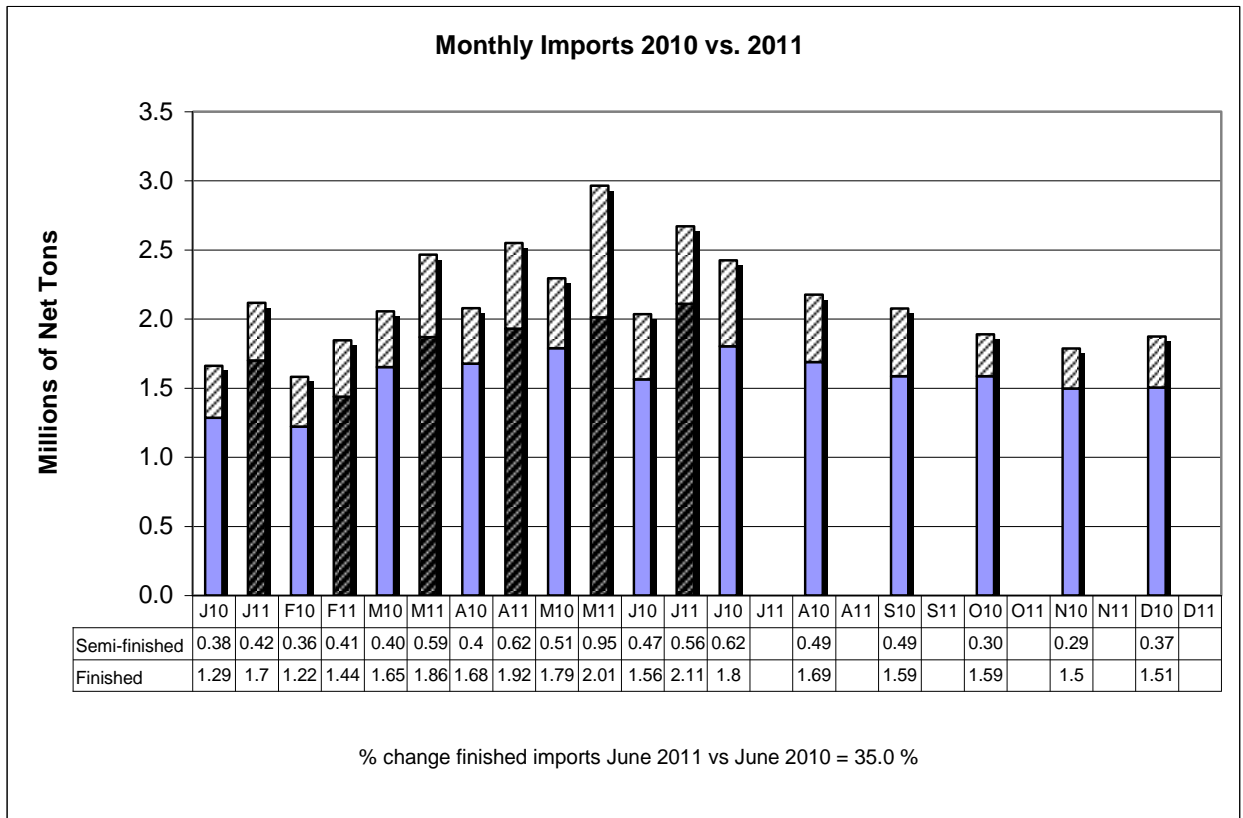
| Product | Preliminary 3 Mos. Rolling Avg. June 11 - Apr. 11 | Actual 3 Mos. Prior March 11 -Jan. 11 | Current 3 Months vs 3 Months Prior % Change |
|--------------------------------|--|--|--|
| Sheets Hot Rolled | 246 | 203 | 21.2% |
| Oil Country Goods | 245 | 221 | 10.9% |
| Line Pipe | 202 | 132 | 53.0% |
| Sheets & Strip Galv Hot Dipped | 142 | 96 | 47.9% |
| Plates in Coils | 139 | 77 | 80.5% |
| Sheets Cold Rolled | 126 | 114 | 10.5% |
| Bars - Hot Rolled | 121 | 104 | 16.3% |
| Wire Rods | 108 | 90 | 20.0% |
| Plates Cut Lengths | 90 | 72 | 25.0% |
| Standard Pipe | 75 | 71 | 5.6% |
| All Other | 523 | 489 | 7.0% |
| Total | 2,017 | 1,669 | 20.8% |

**U.S. IMPORTS OF FINISHED STEEL MILL PRODUCTS
3 MONTHS ROLLING AVERAGE
(thousands of net tons)**

| Country | Preliminary 3 Mos. Rolling Avg. June 11 - Apr. 11 | Actual 3 Mos. Prior March 11 -Jan. 11 | Current 3 Months vs 3 Months Prior % Change |
|----------------|--|--|--|
| South Korea | 282 | 214 | 31.6% |
| China | 129 | 58 | 120.4% |
| Japan | 128 | 124 | 3.4% |
| Turkey | 99 | 52 | 91.8% |
| India | 81 | 41 | 99.5% |
| Germany | 74 | 88 | -16.4% |
| Taiwan | 69 | 48 | 44.4% |
| Russia | 57 | 19 | 199.4% |
| Australia | 48 | 54 | -10.4% |
| Netherlands | 44 | 28 | 58.1% |
| All Other | 1,006 | 944 | 6.6% |
| Total | 2,017 | 1,669 | 20.8% |

Source: U.S. Department of Commerce

-MORE



AISI serves as the voice of the North American steel industry in the public policy arena and advances the case for steel in the marketplace as the preferred material of choice. AISI also plays a lead role in the development and application of new steels and steelmaking technology. AISI is comprised of 25 member companies, including integrated and electric furnace steelmakers, and 118 associate and affiliate members who are suppliers to or customers of the steel industry. AISI's member companies represent approximately 80 percent of both U.S. and North American steel capacity. For more news about steel and its applications, view AISI's Web site at www.steel.org.

-#####-