



FOR IMMEDIATE RELEASE
October 25, 2011

CONTACT: NANCY GRAVATT
202.452.7115/ ngravatt@steel.org

Preliminary Steel Imports Decline 9% in September
Import Market Share at 20%

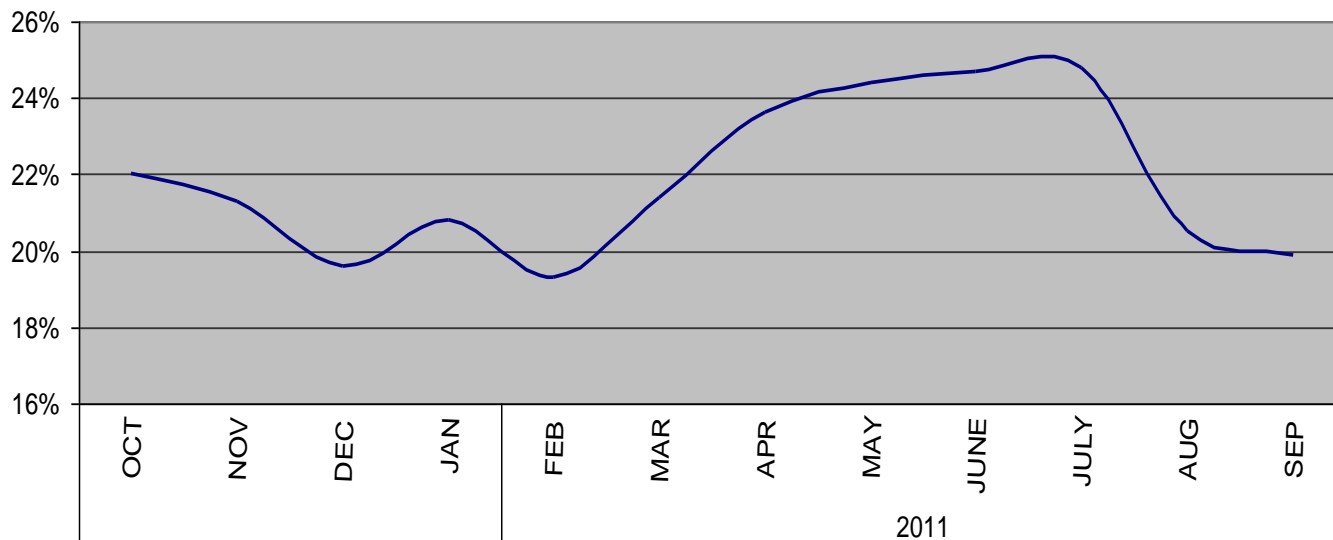
Washington, D.C. – Based on preliminary Census Bureau data, the American Iron and Steel Institute (AISI) reported today that the U.S. imported a total of 2,238,000 net tons (NT) of steel in September, including 1,662,000 NT of finished steel (each down 9% from August final data). Annualized total and finished steel imports in 2011 would be 29.3 and 22.2 million NT, respectively, up 22% and 18% vs. 2010. Finished steel import market share in September was an estimated 20% and is 22% year-to date (YTD).

Key finished steel products with significant import increases in September 2011 compared to August include standard rails (up 100%) and tin plate (up 50%). Major products with significant YTD import increases vs. the same period last year include cut length plates (up 52%), plates in coils (up 34%), hot rolled bar (up 28%), oil country goods (up 25%), reinforcing bar (up 24), cold rolled sheets (up 23%) and line pipe (up 22%).

Steel Mill Product	Sept. (prelim.)	Aug. final	% var Sep. vs. Aug.	(9 mo.) YTD 2011	(9 mo.) YTD 2010	% var '11 vs. 10	2011 Annualized	2010 12 mo.	% var 2011 ann. vs 2010 12 mo.
Ingots and Billets and Slabs	572,602	622,102	-8.0%	5,235,807	4,057,169	29.1%	6,981,076	5,005,064	39.5%
Oil Country Goods	250,801	268,587	-6.6%	2,182,819	1,747,420	24.9%	2,910,426	2,384,004	22.1%
Sheets Hot Rolled	160,840	181,262	-11.3%	2,020,977	1,799,112	12.3%	2,694,636	2,397,458	12.4%
Line Pipe	177,430	172,976	2.6%	1,494,306	1,223,897	22.1%	1,992,408	1,490,643	33.7%
Sheets & Strip Galv Hot Dipped	116,195	119,924	-3.1%	1,112,301	1,124,388	-1.1%	1,483,068	1,420,686	4.4%
Sheets Cold Rolled	101,328	110,138	-8.0%	1,075,258	876,487	22.7%	1,433,677	1,221,365	17.4%
Plates in Coils	101,584	130,888	-22.4%	1,032,015	767,867	34.4%	1,376,019	1,022,372	34.6%
Bars - Hot Rolled	91,531	108,497	-15.6%	1,003,427	787,275	27.5%	1,337,902	1,049,046	27.5%
Plates Cut Lengths	114,534	135,333	-15.4%	853,449	562,829	51.6%	1,137,932	749,357	51.9%
Wire Rods	63,467	71,814	-11.6%	822,860	1,061,868	-22.5%	1,097,147	1,317,772	-16.7%
Standard Pipe	60,670	68,154	-11.0%	655,423	561,068	16.8%	873,898	777,599	12.4%
Bars - Reinforcing	32,378	54,229	-40.3%	515,368	414,736	24.3%	687,158	516,678	33.0%
Wire Drawn	45,534	54,014	-15.7%	488,770	475,063	2.9%	651,693	631,547	3.2%
Mechanical Tubing	44,498	46,158	-3.6%	451,575	300,873	50.1%	602,100	425,779	41.4%
Structural Shapes Heavy	40,586	43,514	-6.7%	432,961	386,544	12.0%	577,282	522,001	10.6%
Sheets & Strip All Other Met. CTD.	39,489	29,371	34.4%	395,507	330,916	19.5%	527,342	413,537	27.5%
Tin Plate	42,699	28,394	50.4%	309,761	358,526	-13.6%	413,015	506,437	-18.4%
All Other	181,980	216,233	-15.8%	1,882,775	1,547,166	21.7%	2,510,366	2,077,806	20.8%
TOTAL	2,238,146	2,461,588	-9.1%	21,965,359	18,383,204	19.5%	29,287,145	23,929,151	22.4%
SUBTOTAL Finished Imports	1,662,416	1,834,189	-9.4%	16,683,751	14,266,041	16.9%	22,245,002	18,857,005	18.0%

In September, the largest volumes of finished steel imports from offshore were from South Korea (212,000 NT, up 6%), Japan (119,000 NT, up 26%), China (107,000 NT, down 11%), Germany (64,000 NT, down 22%) and The Netherlands (59,000 NT, up 127%). For the first 9 months of 2011, the largest offshore suppliers have been South Korea (2,226,000 NT, up 49%), Japan (1,109,000 NT, up 11%) and China (944,000 NT, up 41%). Below are charts on estimated steel import market share in recent months and on finished steel imports from offshore by country.

Estimated Finished Steel Import Market Share for the Past 12 Months



**U.S. IMPORTS OF FINISHED STEEL MILL PRODUCTS
BY COUNTRY OF ORIGIN
(thousands of net tons)**

COUNTRY	Sep. 2011	Aug. 2011	% incr. Sept. vs Aug.	(9 mo.) YTD 2011	(9 mo.) YTD 2010	% incr. '11 YTD vs. '10	2011 full year (est.)	2010 Annual	% incr. 2011 an. vs. '10
South Korea	212	200	5.7%	2,226	1,491	49.3%	2,968	2,041	45.4%
Japan	119	94	26.4%	1,109	999	11.0%	1,479	1,325	11.6%
China	107	120	-10.9%	944	668	41.4%	1,259	858	46.7%
Germany	64	81	-21.7%	717	664	8.1%	956	879	8.7%
Turkey	33	51	-36.2%	569	494	15.1%	758	582	30.4%
India	47	84	-44.1%	552	568	-2.9%	736	713	3.2%
Netherlands	59	26	127.2%	353	372	-5.1%	471	554	-15.0%
All Other	1,022	1,177	-13.2%	10,214	9,010	13.4%	13,618	11,906	14.4%
Total	1,662	1,834	-9.4%	16,684	14,266	16.9%	22,245	18,857	18.0%

**U.S. IMPORTS OF FINISHED STEEL MILL PRODUCTS
3 MONTHS ROLLING AVERAGE
(thousands of net tons)**

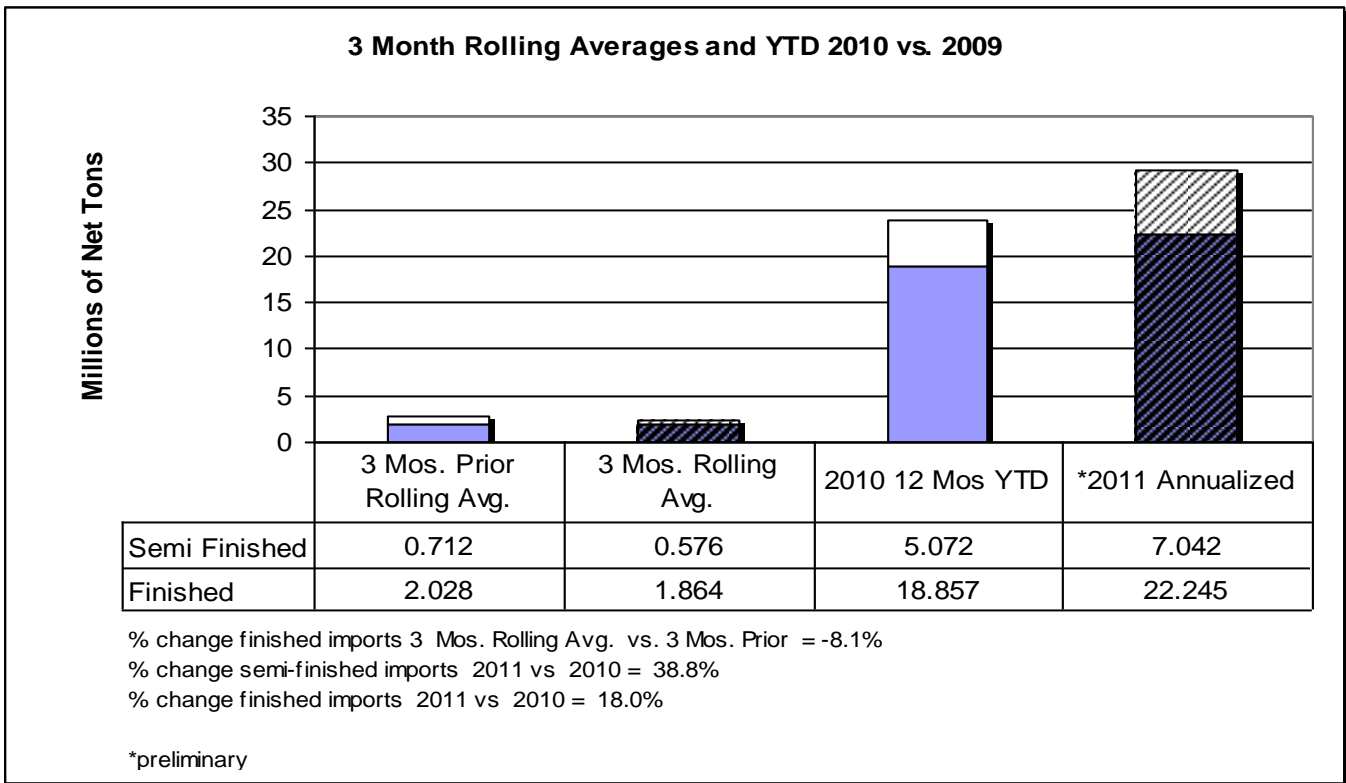
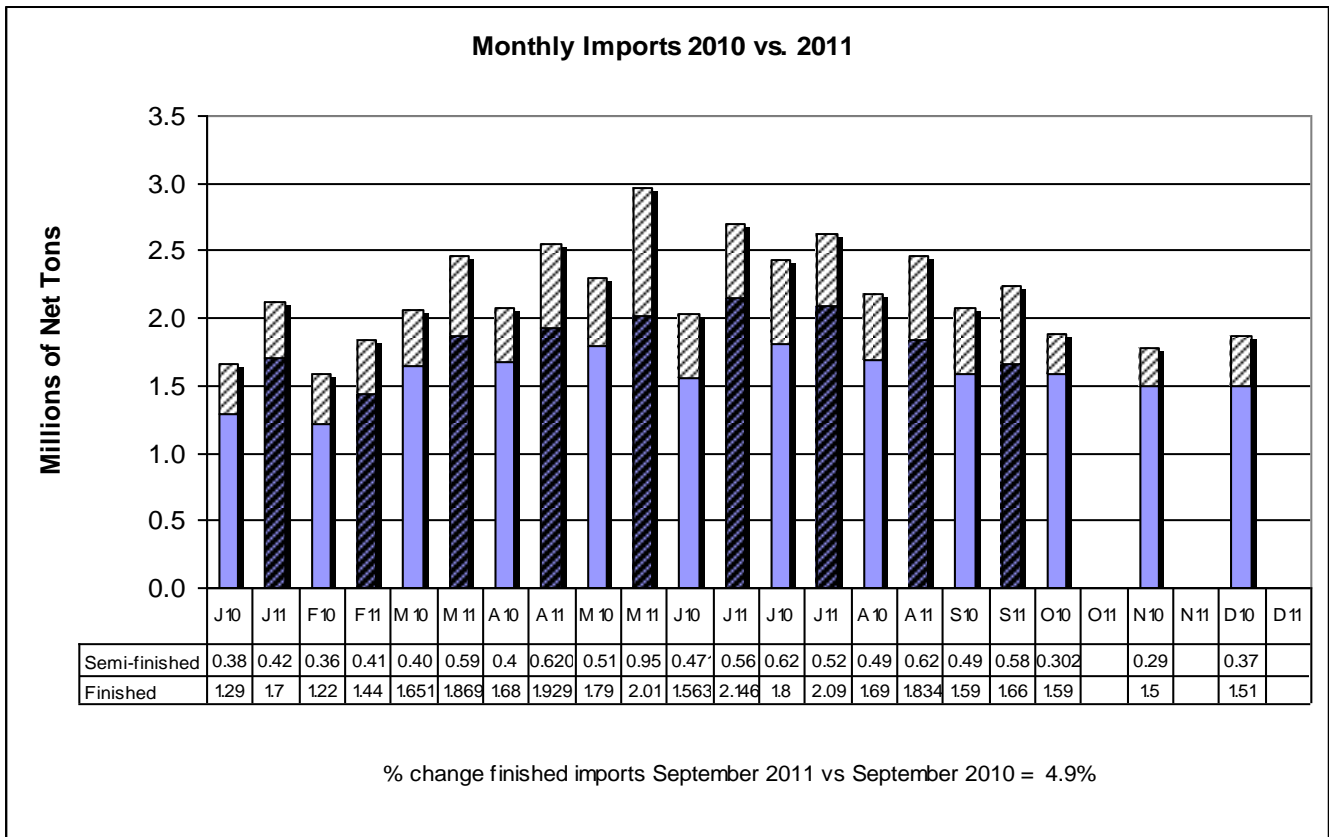
Product	Preliminary 3 Mos. Rolling Avg. Sep. 11 - July 11	Actual 3 Mos. Prior Jun. 11 -Apr. 11	Current 3 Months vs 3 Months Prior % Change
Oil Country Goods	262	245	6.9%
Sheets Hot Rolled	223	247	-9.7%
Line Pipe	164	202	-18.8%
Sheets & Strip Galv Hot Dipped	133	142	-6.3%
Cut Length Plates	122	91	34.1%
Plates in Coils	122	146	-16.4%
Sheets Cold Rolled	119	126	-5.6%
Bars - Hot Rolled	110	121	-9.1%
Wire Rods	76	108	-29.6%
Standard Pipe	72	75	-4.0%
All Other	461	525	-12.2%
Total	1,864	2,028	-8.1%

**U.S. IMPORTS OF FINISHED STEEL MILL PRODUCTS
3 MONTHS ROLLING AVERAGE
(thousands of net tons)**

Country	Preliminary 3 Mos. Rolling Avg. Sep. 11 - July 11	Actual 3 Mos. Prior Jun. 11 -Apr. 11	Current 3 Months vs 3 Months Prior % Change
South Korea	239	289	-17.3%
China	128	129	-0.8%
Japan	117	128	-8.6%
Germany	77	74	4.1%
Russia	67	58	15.5%
India	61	82	-25.6%
Australia	56	48	16.7%
Taiwan	53	69	-23.2%
Netherlands	45	44	2.3%
Turkey	39	99	-60.6%
All Other	982	1,008	-2.6%
Total	1,864	2,028	-8.1%

Source: U.S. Department of Commerce

-MORE



AISI serves as the voice of the North American steel industry in the public policy arena and advances the case for steel in the marketplace as the preferred material of choice. AISI also plays a lead role in the development and application of new steels and steelmaking technology. AISI is comprised of 25 member companies, including integrated and electric furnace steelmakers, and 118 associate and affiliate members who are suppliers to or customers of the steel industry. AISI's member companies represent approximately 80 percent of both U.S. and North American steel capacity. For more news about steel and its applications, view AISI's Web site at www.steel.org.

-#####-