



FOR IMMEDIATE RELEASE
September 27, 2011

CONTACT: NANCY GRAVATT
202.452.7115/ ngravatt@steel.org

Preliminary Steel Imports Decline 7% in August
Import Market Share at 20%

Washington, D.C. – Based on preliminary Census Bureau data, the American Iron and Steel Institute (AISI) reported today that the U.S. imported a total of 2,440,000 net tons (NT) of steel in August, including 1,813,000 NT of finished steel (down 7% and 13%, respectively, from July final data). Annualized total and finished steel imports in 2011 would be 29.6 and 22.5 million NT, respectively, up 24% and 19% vs. 2010. Finished steel import market share in August was an estimated 20% and is 22% year-to date (YTD).

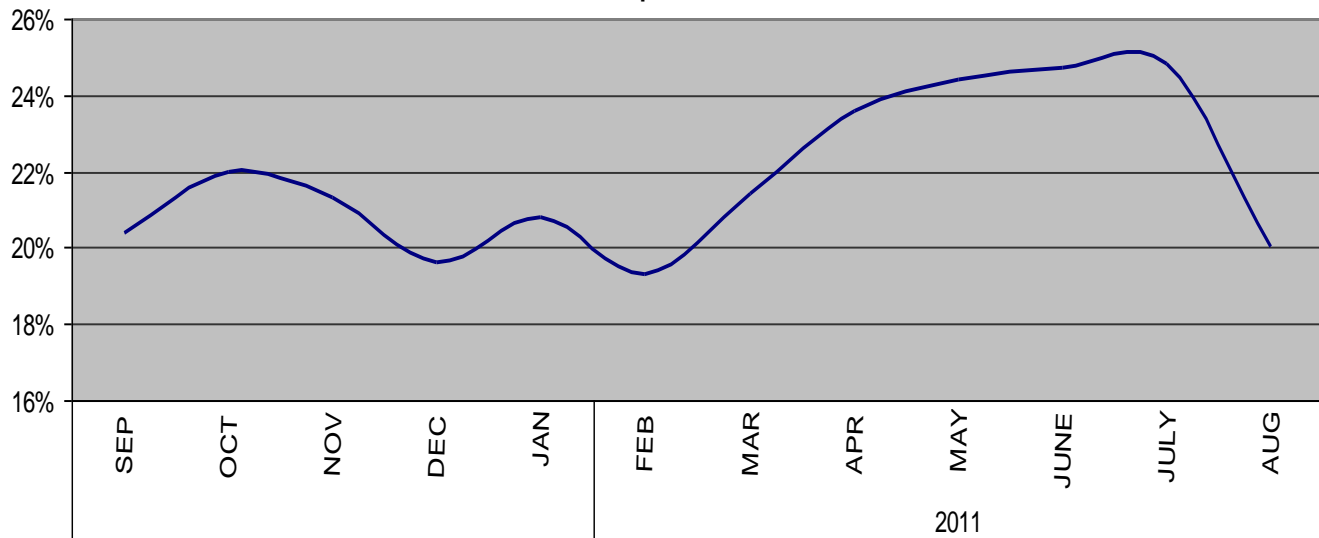
Key finished steel products with significant import increases in August 2011 compared to July include reinforcing bar (up 88%), line pipe (up 22%) and cut length plates (up 16%). Major products with significant YTD import increases vs. the same period last year include cut length plates (up 49%), plates in coils (up 36%), reinforcing bar (up 31%), hot rolled bar (up 29%), cold rolled sheets (up 28%), oil country goods (up 26%) and hot rolled sheets (up 19%).

Steel Mill Product	August (prelim.)	July final	% var Aug. vs. July	(8 mo.) YTD 2011	(8 mo.) YTD 2010	% var '11 vs. 10	2011 Annualized	2010 12 mo.	% var 2011 ann. vs 2010 12 mo.
Ingots and Billets and Slabs	621,855	521,081	19.3%	4,662,958	3,568,306	30.7%	6,994,436	5,005,064	39.7%
Oil Country Goods	256,342	266,537	-3.8%	1,919,772	1,523,766	26.0%	2,879,659	2,384,006	20.8%
Sheets Hot Rolled	180,780	328,123	-44.9%	1,859,656	1,569,625	18.5%	2,789,484	2,397,457	16.4%
Line Pipe	172,255	141,813	21.5%	1,316,155	1,114,289	18.1%	1,974,232	1,490,643	32.4%
Sheets & Strip Galv Hot Dipped	119,903	162,117	-26.0%	996,085	1,028,839	-3.2%	1,494,127	1,420,685	5.2%
Sheets Cold Rolled	109,711	144,036	-23.8%	973,501	761,952	27.8%	1,460,251	1,221,366	19.6%
Plates in Coils	130,800	132,120	-1.0%	930,342	682,219	36.4%	1,395,513	1,022,373	36.5%
Bars - Hot Rolled	106,756	129,271	-17.4%	910,154	703,201	29.4%	1,365,230	1,049,048	30.1%
Wire Rods	71,813	91,996	-21.9%	759,392	965,334	-21.3%	1,139,089	1,317,772	-13.6%
Plates Cut Lenghs	134,297	115,869	15.9%	737,879	495,355	49.0%	1,106,818	749,356	47.7%
Standard Pipe	67,286	87,545	-23.1%	593,887	495,892	19.8%	890,831	777,599	14.6%
Bars - Reinforcing	54,004	28,805	87.5%	482,766	367,989	31.2%	724,150	516,679	40.2%
Wire Drawn	53,990	54,984	-1.8%	443,191	424,954	4.3%	664,787	631,548	5.3%
Mechanical Tbing	46,081	54,116	-14.8%	406,999	260,711	56.1%	610,499	425,796	43.4%
Structural Shapes Heavy	43,509	44,486	-2.2%	392,370	355,121	10.5%	588,555	521,999	12.8%
Sheets & Strip All Other Met.	29,371	57,975	-49.3%	356,018	299,790	18.8%	534,027	413,538	29.1%
Tin Plate	28,393	39,996	-29.0%	267,063	317,932	-16.0%	400,595	506,439	-20.9%
All Other	212,663	219,365	-3.1%	1,697,225	1,371,636	23.7%	2,545,838	2,077,798	22.5%
TOTAL	2,439,810	2,620,235	-6.9%	19,705,414	16,306,911	20.8%	29,558,122	23,929,166	23.5%
SUBTOTAL Finished Imports	1,812,660	2,094,653	-13.5%	14,999,786	12,684,106	18.3%	22,499,680	18,857,020	19.3%

-MORE-

In August, the largest volumes of finished steel imports from offshore were from South Korea (200,000 NT, down 34%), China (119,000 NT, down 23%), Japan (91,000 NT, down 35%), India (84,000 NT, up 58%) and Germany (81,000 NT, down 7%). For the first 8 months of 2011, the largest offshore suppliers have been South Korea (2,013,000 NT, up 57%), Japan (988,000 NT, up 11%) and China (837,000 NT, up 48%). Below are charts on estimated steel import market share in recent months and on finished steel imports from offshore by country.

Estimated Finished Steel Import Market Share for the Past 12 Months



**U.S. IMPORTS OF FINISHED STEEL MILL PRODUCTS
BY COUNTRY OF ORIGIN
(thousands of net tons)**

COUNTRY	Aug. 2011	July 2011	% incr. Aug. vs July	(8 mo.) YTD 2011	(8 mo.) YTD 2010	% incr. '11 YTD vs. '10	2011 full year (est.)	2010 Annual	% incr. 2011 an. vs. '10
South Korea	200	304	-34.4%	2,013	1,282	57.0%	3,020	2,041	48.0%
Japan	91	139	-34.5%	988	887	11.4%	1,481	1,325	11.8%
China	119	156	-23.3%	837	567	47.7%	1,255	858	46.3%
Germany	81	87	-6.7%	653	605	7.9%	980	879	11.5%
Turkey	51	33	55.6%	536	453	18.3%	804	582	38.3%
India	84	53	58.3%	505	548	-8.0%	757	713	6.2%
Russia	67	89	-24.8%	386	195	98.1%	580	325	78.3%
All Other	1,119	1,234	-9.3%	9,082	8,146	11.5%	13,622	12,134	12.3%
Total	1,813	2,095	-13.5%	15,000	12,684	18.3%	22,500	18,857	19.3%

**U.S. IMPORTS OF FINISHED STEEL MILL PRODUCTS
3 MONTHS ROLLING AVERAGE
(thousands of net tons)**

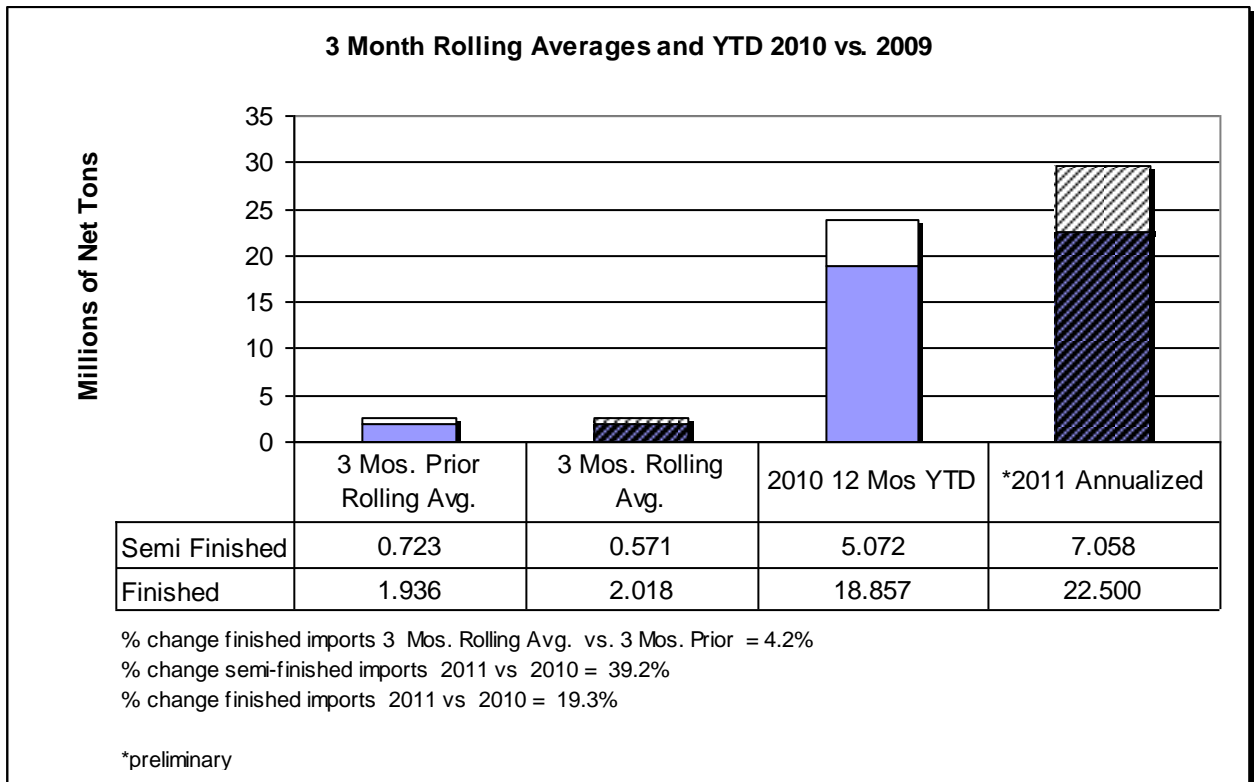
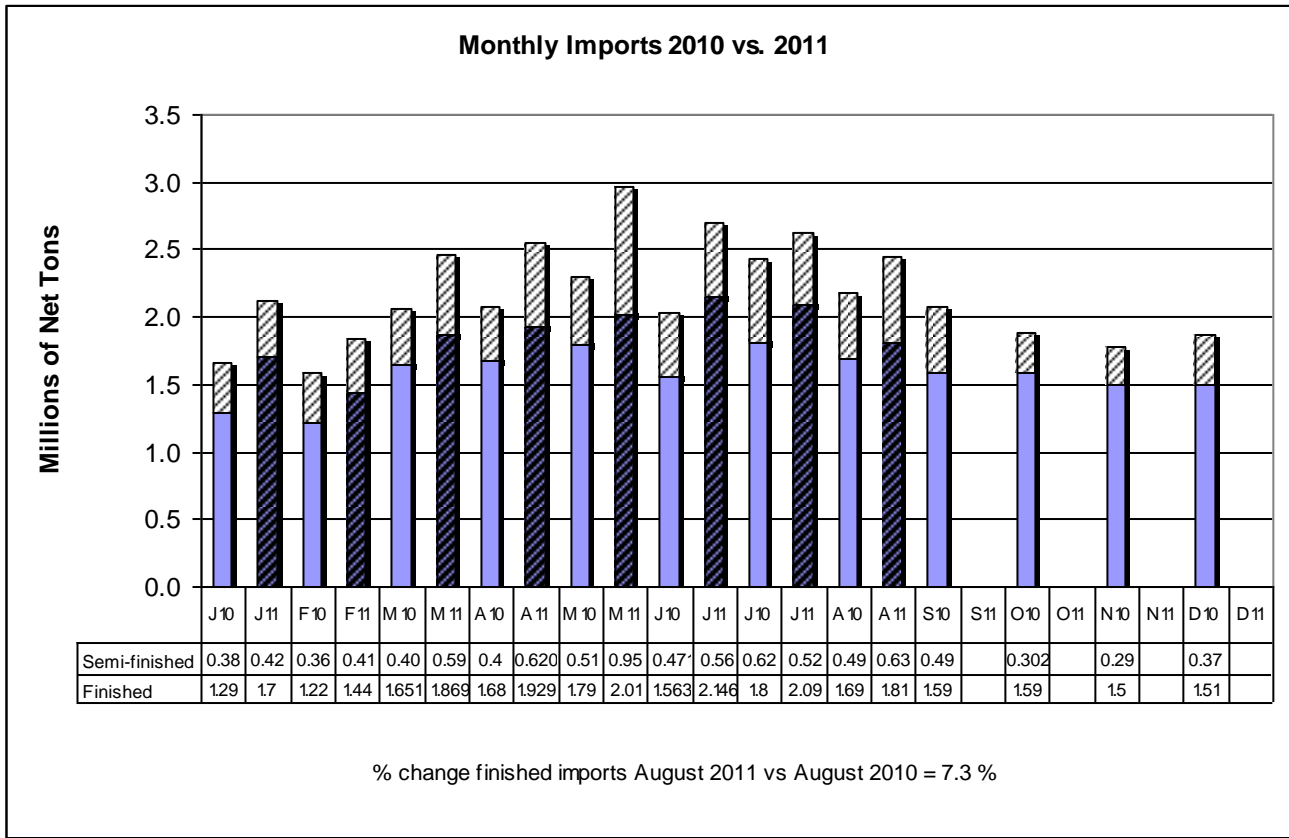
Product	Preliminary 3 Mos. Rolling Avg. Aug. 11 - June. 11	Actual 3 Mos. Prior May 11 -Mar. 11	Current 3 Months vs 3 Months Prior % Change
Oil Country Goods	264	236	11.9%
Sheets Hot Rolled	246	244	0.8%
Line Pipe	177	175	1.1%
Plates in Coils	143	120	19.2%
Sheets & Strip Galv Hot Dipped	142	132	7.6%
Sheets Cold Rolled	129	133	-3.0%
Bars - Hot Rolled	122	116	5.2%
Plates Cut Lenghs	118	82	43.9%
Wire Rods	95	99	-4.0%
Standard Pipe	76	77	-1.3%
All Other	506	522	-3.1%
Total	2,018	1,936	4.2%

**U.S. IMPORTS OF FINISHED STEEL MILL PRODUCTS
3 MONTHS ROLLING AVERAGE
(thousands of net tons)**

Country	Preliminary 3 Mos. Rolling Avg. Aug. 11 - June. 11	Actual 3 Mos. Prior May 11 -Mar. 11	Current 3 Months vs 3 Months Prior % Change
South Korea	276	262	5.1%
China	146	98	49.3%
Japan	118	125	-5.5%
Russia	87	27	226.0%
Germany	77	85	-9.6%
Taiwan	62	62	0.5%
India	62	84	-26.2%
Turkey	58	86	-32.4%
Australia	53	46	13.9%
Netherlands	43	41	4.6%
All Other	1,037	1,021	1.6%
Total	2,018	1,936	4.2%

Source: U.S. Department of Commerce

-MORE



AISI serves as the voice of the North American steel industry in the public policy arena and advances the case for steel in the marketplace as the preferred material of choice. AISI also plays a lead role in the development and application of new steels and steelmaking technology. AISI is comprised of 25 member companies, including integrated and electric furnace steelmakers, and 118 associate and affiliate members who are suppliers to or customers of the steel industry. AISI's member companies represent approximately 80 percent of both U.S. and North American steel capacity. For more news about steel and its applications, view AISI's Web site at www.steel.org.

-#####-