



**FOR IMMEDIATE RELEASE**  
**June 21, 2011**

**CONTACT: NANCY GRAVATT**  
**202.452.7115/ [ngravatt@steel.org](mailto:ngravatt@steel.org)**

**Preliminary Steel Imports Increase 6% in May**  
**Import Market Share at 21%**

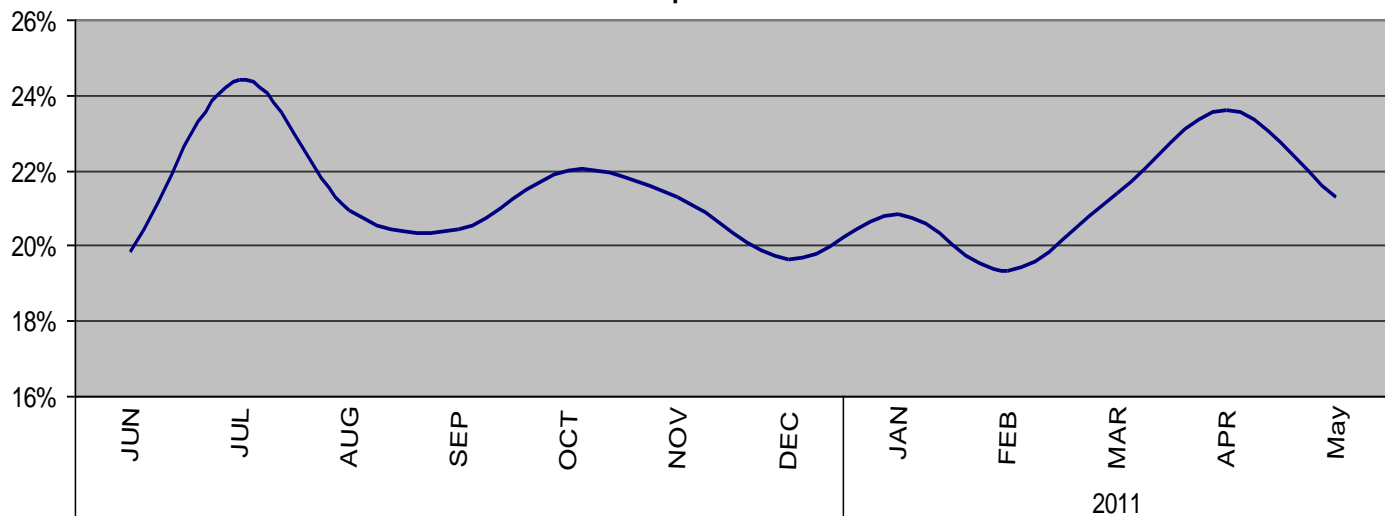
**Washington, D.C.** – Based on preliminary Census Bureau data, the American Iron and Steel Institute (AISI) reported today that the U.S. imported a total of 2,692,000 net tons (NT) of steel in May, including 1,838,000 NT of finished steel (up 6% and down 5%, respectively, from April final data). Annualized total and finished steel imports in 2011 would be 28.0 and 21.1 million NT, respectively, up 17% and 12% vs. 2010. Finished steel import market share in May was an estimated 21% and is also 21% year-to date.

Key finished steel products with significant import increases in May 2011 compared to April include wire rod (up 35%), plates in coils (up 23%), oil country goods (up 15%) and heavy structural shapes (up 14%). Major products with significant year-to-date import increases vs. the same period last year include reinforcing bar (up 55%), oil country goods (up 41%) and hot rolled bars (up 25%).

Steel Mill Product	May (prelim.)	Apr. final	% var May. vs. Apr.	(5 mo.) YTD 2011	(5 mo.) YTD 2010	% var '11 vs. 10	2011 Annualized	2010 12 mo.	% var 2011 ann. vs 2010 12 mo.
Ingot and Billets and Slabs	848,410	611,992	38.6%	2,869,335	2,032,282	41.2%	6,886,404	5,005,064	37.6%
Oil Country Goods	242,201	210,732	14.9%	1,115,644	790,732	41.1%	2,677,545	2,384,004	12.3%
Hot Rolled Sheets	250,589	249,780	0.3%	1,109,651	979,906	13.2%	2,663,163	2,397,458	11.1%
Line Pipe	159,327	206,734	-22.9%	761,105	710,243	7.2%	1,826,653	1,490,643	22.5%
Cold Rolled Sheets	106,950	128,119	-16.5%	577,909	479,815	20.4%	1,386,983	1,221,365	13.6%
Sheets & Strip Galv Hot Dipped	117,745	153,941	-23.5%	559,277	619,315	-9.7%	1,342,265	1,420,686	-5.5%
Bars - Hot Rolled	106,538	116,572	-8.6%	534,289	425,937	25.4%	1,282,295	1,049,046	22.2%
Plates in Coils	135,339	110,088	22.9%	474,971	451,603	5.2%	1,139,930	1,022,372	11.5%
Wire Rods	113,840	84,366	34.9%	469,484	600,106	-21.8%	1,126,762	1,317,772	-14.5%
Plates Cut Lengths	74,404	82,678	-10.0%	373,433	309,777	20.5%	896,239	749,357	19.6%
Standard Pipe	76,040	71,086	7.0%	360,089	289,146	24.5%	864,214	777,599	11.1%
Bars - Reinforcing	34,215	94,739	-63.9%	325,518	210,042	55.0%	781,243	516,678	51.2%
Wire Drawn	57,276	56,005	2.3%	273,186	251,849	8.5%	655,647	631,547	3.8%
Mechanical Tubing	40,569	60,162	-32.6%	250,689	141,521	77.1%	601,654	425,779	41.3%
Structural Shapes Heavy	55,538	48,958	13.4%	233,341	210,137	11.0%	560,019	522,001	7.3%
Sheets & Strip All Other Met. Coated	31,448	54,359	-42.1%	206,230	176,064	17.1%	494,951	413,537	19.7%
Tin Plate	32,130	28,886	11.2%	163,990	177,960	-7.9%	393,575	506,437	-22.3%
ALL OTHER	209,366	179,837	16.4%	1,009,627	814,649	23.9%	2,423,103	2,077,807	16.6%
<b>TOTAL</b>	<b>2,691,925</b>	<b>2,549,034</b>	<b>5.6%</b>	<b>11,667,768</b>	<b>9,671,084</b>	<b>20.6%</b>	<b>28,002,645</b>	<b>23,929,152</b>	<b>17.0%</b>
<b>SUBTOTAL Finished Imports</b>	<b>1,838,383</b>	<b>1,928,250</b>	<b>-4.7%</b>	<b>8,774,172</b>	<b>7,625,330</b>	<b>15.1%</b>	<b>21,058,012</b>	<b>18,857,006</b>	<b>11.7%</b>

In May, the largest volumes of finished steel imports from offshore were from South Korea (213,000 NT, down 31%), Japan (131,000 NT, up 16%), China (119,000 NT, up 23%), Germany (78,000 NT up 8%), and Turkey (69,000 NT, down 42%). For the first 5 months of 2011, the largest offshore suppliers were South Korea (1,164,000 NT, up 58%), Japan (615,000 NT, up 12%) and Germany (415,000 NT, up 6%). Below are charts on estimated steel import market share in recent months and on finished steel imports from offshore by country.

**Estimated Finished Steel Import Market Share for the Past 12 Months**



**U.S. IMPORTS OF FINISHED STEEL MILL PRODUCTS  
BY COUNTRY OF ORIGIN  
(thousands of net tons)**

COUNTRY	May 2010	Apr. 2010	% incr. May vs Apr.	(5 mo.) YTD 2011	(5 mo.) YTD 2010	% incr. '11 YTD vs. '10	2011 full year (est.)	2010 Annual	% incr. 2011 an. vs. '10
South Korea	213	309	<b>-31.2%</b>	1,164	736	<b>58.2%</b>	2,795	2,041	<b>36.9%</b>
Japan	131	113	<b>16.0%</b>	615	550	<b>11.8%</b>	1,476	1,325	<b>11.4%</b>
Germany	78	72	<b>8.4%</b>	415	390	<b>6.4%</b>	996	879	<b>13.3%</b>
China	119	97	<b>22.8%</b>	391	294	<b>32.9%</b>	937	858	<b>9.2%</b>
Turkey	69	118	<b>-41.7%</b>	341	255	<b>33.6%</b>	819	582	<b>40.8%</b>
India	68	126	<b>-46.0%</b>	316	288	<b>9.9%</b>	759	713	<b>6.5%</b>
Australia	48	57	<b>-15.2%</b>	266	219	<b>21.7%</b>	639	519	<b>23.0%</b>
ALL OTHER	1,113	1,037	<b>7.3%</b>	5,266	4,894	<b>7.6%</b>	12,638	11,940	<b>5.8%</b>
Total	1,838	1,929	<b>-4.7%</b>	8,774	7,625	<b>15.1%</b>	21,058	18,857	<b>11.7%</b>

**U.S. IMPORTS OF FINISHED STEEL MILL PRODUCTS  
3 MONTHS ROLLING AVERAGE  
(thousands of net tons)**

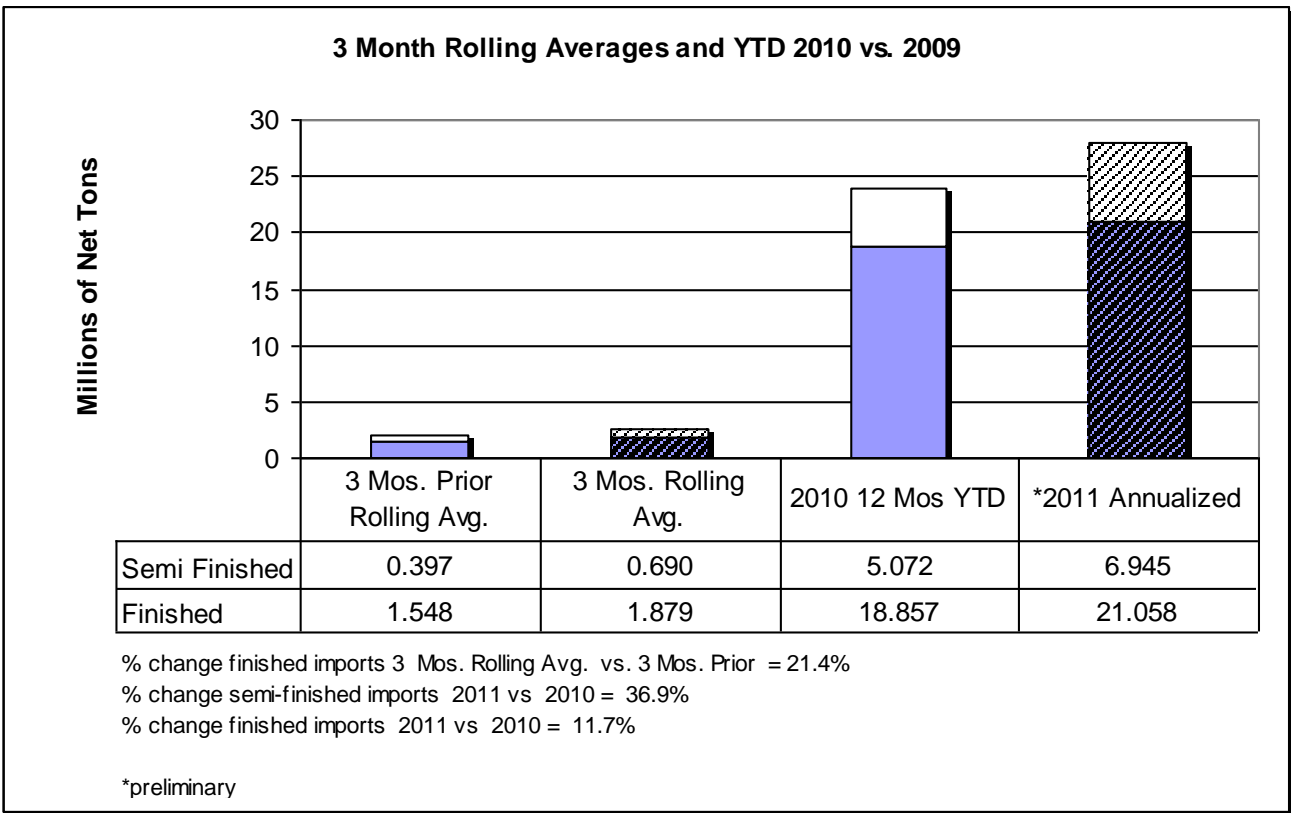
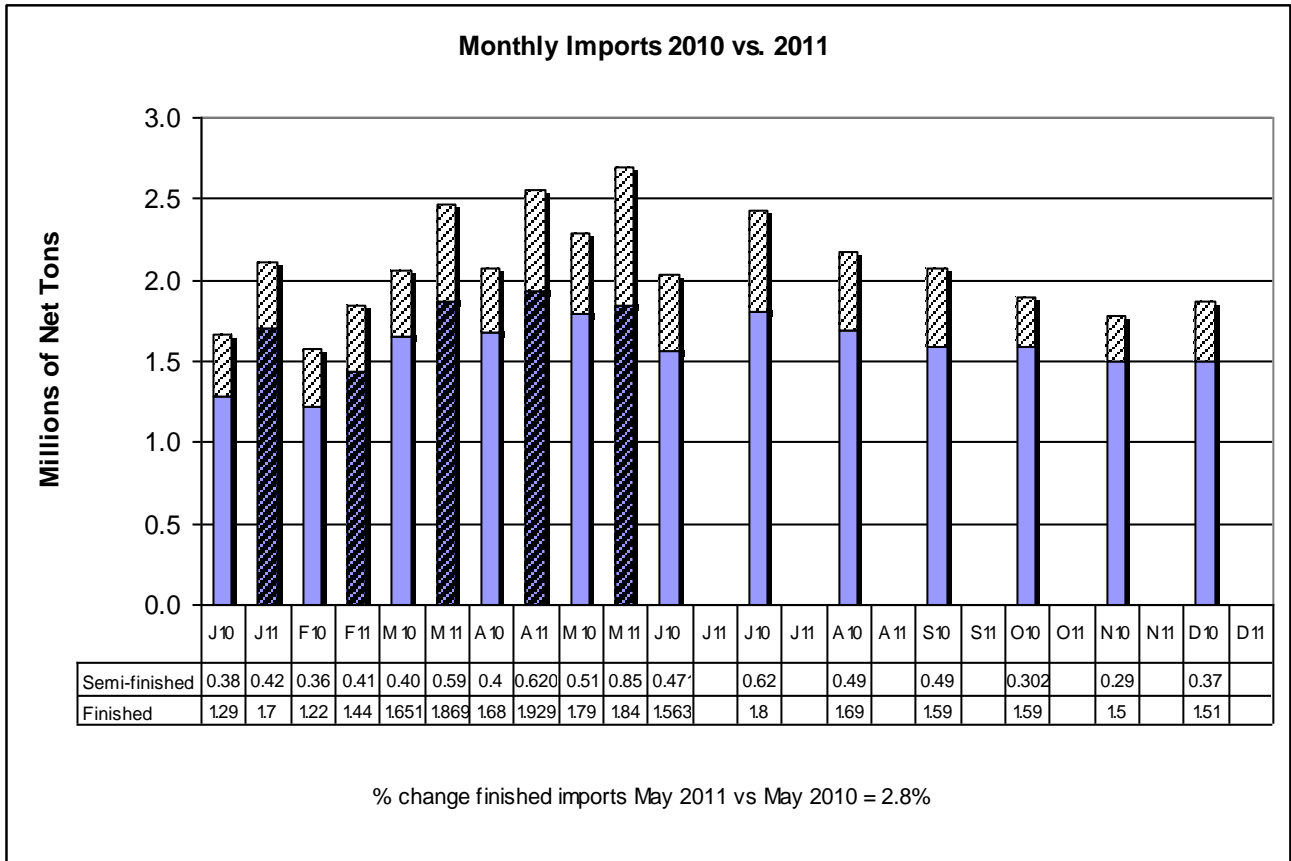
<b>Product</b>	<b>Preliminary 3 Mos. Rolling Avg. May. 11 - Mar. 11</b>	<b>Actual 3 Mos. Prior Feb. 11 - Dec. 10</b>	<b>Current 3 Months vs 3 Months Prior % Change</b>
Hot Rolled Sheets	240	202	18.8%
Oil Country Goods	232	197	17.8%
Line Pipe	167	117	42.7%
Sheets Cold Rolled	130	101	28.7%
Sheets & Strip Galv Hot Dipped	128	86	48.8%
Bars - Hot Rolled	112	98	14.3%
Plates in Coils	111	78	42.3%
Wire Rods	97	86	12.8%
Plates Cut Lengths	78	71	9.9%
Standard Pipe	75	64	17.2%
All Other	509	448	13.6%
<b>Total</b>	<b>1,879</b>	<b>1,548</b>	<b>21.4%</b>

**U.S. IMPORTS OF FINISHED STEEL MILL PRODUCTS  
3 MONTHS ROLLING AVERAGE  
(thousands of net tons)**

<b>Country</b>	<b>Preliminary 3 Mos. Rolling Avg. May. 11 - Mar. 11</b>	<b>Actual 3 Mos. Prior Feb. 11 - Dec. 10</b>	<b>Current 3 Months vs 3 Months Prior % Change</b>
South Korea	255	199	28.1%
Japan	119	120	-0.8%
China	94	57	64.9%
India	82	32	156.3%
Germany	82	78	5.1%
Turkey	79	42	88.1%
Taiwan	60	42	42.9%
Brazil	47	24	95.8%
Australia	46	56	-17.9%
Netherlands	38	35	8.6%
All Other	977	863	13.2%
<b>Total</b>	<b>1,879</b>	<b>1,548</b>	<b>21.4%</b>

Source: U.S. Department of Commerce

-MORE



AISI serves as the voice of the North American steel industry in the public policy arena and advances the case for steel in the marketplace as the preferred material of choice. AISI also plays a lead role in the development and application of new steels and steelmaking technology. AISI is comprised of 25 member companies, including integrated and electric furnace steelmakers, and 118 associate and affiliate members who are suppliers to or customers of the steel industry. AISI's member companies represent approximately 80 percent of both U.S. and North American steel capacity. For more news about steel and its applications, view AISI's Web site at [www.steel.org](http://www.steel.org).

-#####-