



**FOR IMMEDIATE RELEASE
August 23, 2013**

**CONTACT Lisa Harrison
202.452.7115/ lharrison@steel.org**

**PRELIMINARY STEEL IMPORTS INCREASE 1% IN JULY
Import Market Share 22% in July**

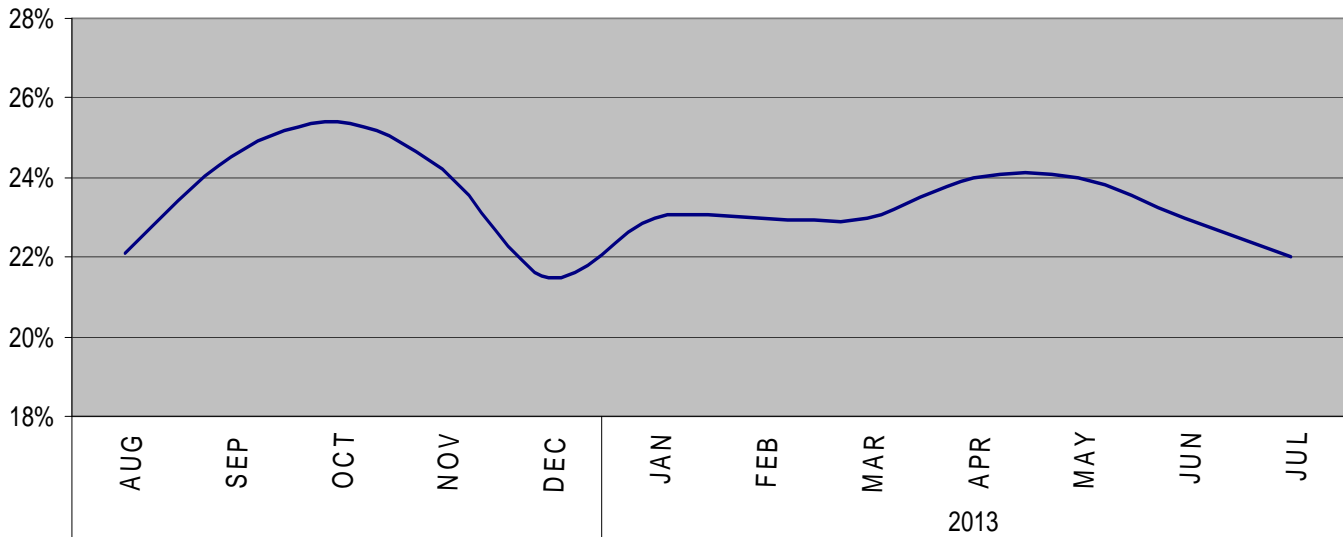
Washington, D.C. – Based on preliminary Census Bureau data, the American Iron and Steel Institute (AISI) reported today that the U.S. imported a total of 2,475,000 net tons (NT) of steel in July, including 1,956,000 net tons (NT) of finished steel (up 0.6% and down 0.9%, respectively, vs. June final data). Year-to-date (YTD) total and finished steel imports are 18,207,000 and 14,325,000 net tons (NT), respectively, down 11% and 10% vs. 2012. Annualized total and finished steel imports in 2013 would be 31.2 and 24.6 million NT, down 7% and 5% respectively vs. 2012. Finished steel import market share was an estimated 22% in July and is estimated at 23% YTD.

Key finished steel products with a significant import increase in July 2013 compared to June are wire rods (up 52%), hot rolled bars (up 23%) and hot rolled sheets (up 19%).

Steel Mill Product	July (prelim.)	June final	% var July vs. June	(7 mo.) YTD 2013	(7 mo.) YTD 2012	% var '13 vs. '12	2013 Ann.	2012 12 mo.	% var 2013 ann. vs 2012 12 mo.
Ingots and Billets and Slabs	514,340	483,188	6.4%	3,859,122	4,555,980	-15.3%	6,615,637	7,605,694	-13.0%
Oil Country Goods	234,341	268,480	-12.7%	1,767,079	2,283,754	-22.6%	3,029,278	3,619,704	-16.3%
Sheets Hot Rolled	270,947	227,622	19.0%	1,607,196	1,726,839	-6.9%	2,755,193	2,815,577	-2.1%
Line Pipe	202,127	208,855	-3.2%	1,542,584	1,713,600	-10.0%	2,644,430	2,774,485	-4.7%
Sheets & Strip Galv Hot Dipped	130,617	119,477	9.3%	1,138,902	1,161,686	-2.0%	1,952,403	2,002,258	-2.5%
Bars - Hot Rolled	180,327	146,777	22.9%	1,019,714	939,640	8.5%	1,748,081	1,543,965	13.2%
Sheets Cold Rolled	109,731	113,497	-3.3%	859,521	901,025	-4.6%	1,473,464	1,620,978	-9.1%
Bars - Reinforcing	49,265	103,958	-52.6%	700,041	659,269	6.2%	1,200,070	979,433	22.5%
Plates in Coils	87,661	93,063	-5.8%	638,791	941,767	-32.2%	1,095,069	1,542,156	-29.0%
Plates Cut Lengths	66,346	77,938	-14.9%	621,485	860,867	-27.8%	1,065,404	1,391,859	-23.5%
Wire Rods	95,266	62,657	52.0%	551,806	726,650	-24.1%	945,954	1,096,440	-13.7%
Standard Pipe	75,001	82,686	-9.3%	534,758	580,616	-7.9%	916,727	966,719	-5.2%
Wire Drawn	64,540	60,882	6.0%	430,581	412,012	4.5%	738,138	683,930	7.9%
Sheets & Strip All Other Met.	57,693	46,652	23.7%	398,032	413,942	-3.8%	682,340	662,213	3.0%
Structural Shapes Heavy	45,937	53,242	-13.7%	358,218	287,665	24.5%	614,089	482,158	27.4%
Mechanical Tubing	50,004	52,482	-4.7%	326,717	417,306	-21.7%	560,087	658,305	-14.9%
Tin Plate	46,188	45,660	1.2%	309,556	257,933	20.0%	530,667	470,802	12.7%
All Other	194,578	212,972	-8.6%	1,542,726	1,568,089	-1.6%	2,644,676	2,557,864	3.4%
TOTAL	2,474,909	2,460,088	0.6%	18,206,829	20,408,640	-10.8%	31,211,707	33,474,540	-6.8%
SUBTOTAL Finished Imports	1,956,168	1,973,929	-0.9%	14,324,913	15,826,198	-9.5%	24,556,994	25,825,787	-4.9%

In July, the largest volumes of finished steel imports from offshore were all from Asia and Europe. They were from South Korea (263,000 NT, up 10% vs. June final), China (176,000 NT, up 14%), Japan (148,000 NT, up 12%), Germany (91,000 NT, down 15%) and Taiwan (73,000 NT, up 35%). For seven months of 2013, the largest offshore suppliers were South Korea (2,020,000 NT, down 10%), Japan (1,106,000 NT, down 8%), China (1,075,000 NT, up 16%), Turkey (798,000 NT, down 15%) and Germany (646,000 NT, down 11%). Below are charts on estimated steel import market share in recent months and on finished steel imports from offshore by country.

Estimated Finished Steel Import Market Share for the Past 12 Months



**U.S. IMPORTS OF FINISHED STEEL MILL PRODUCTS
BY COUNTRY OF ORIGIN
(thousands of net tons)**

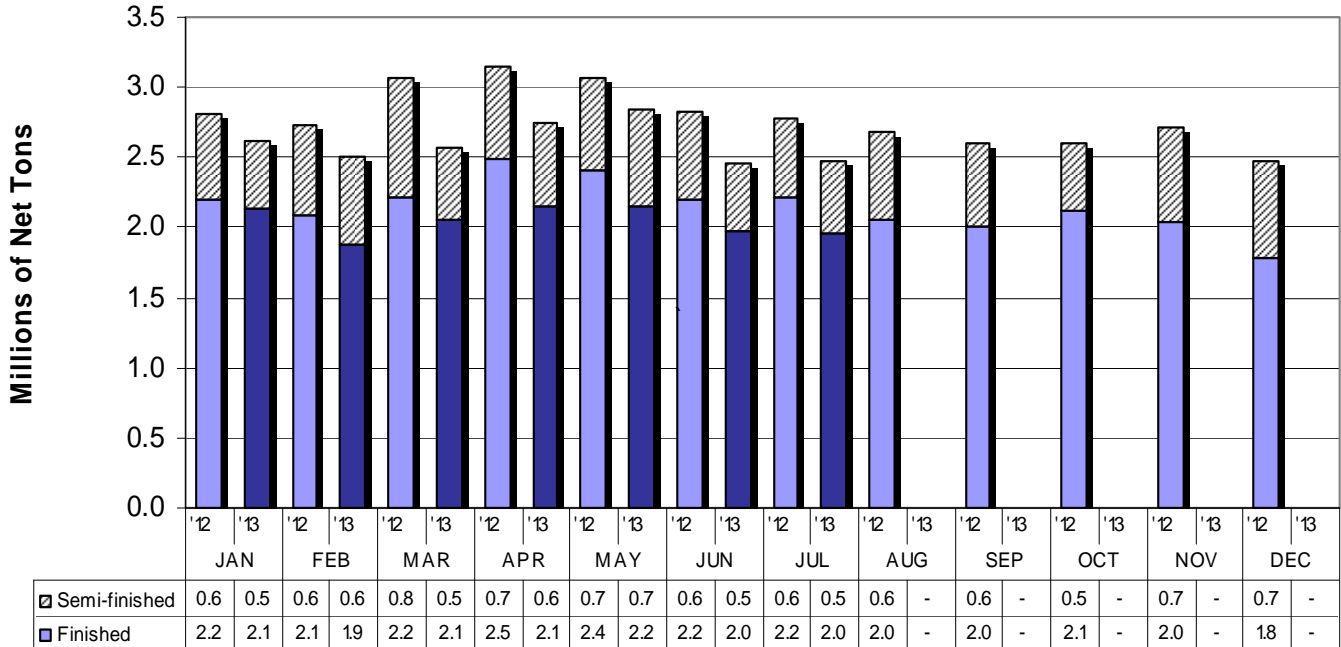
COUNTRY	July 2013	June 2013	% incr. July vs. June	(7 mo.) YTD 2013	(7 mo.) YTD 2012	% incr. '13 YTD vs. '12	2013 full year (est.)	2012 Annual	% incr. 2013 vs. '12
South Korea	263	239	10.2%	2,020	2,238	-9.7%	3,463	3,651	-5.1%
Japan	148	132	11.6%	1,106	1,198	-7.6%	1,896	1,931	-1.8%
China	176	155	14.0%	1,075	926	16.0%	1,842	1,652	11.5%
Turkey	59	99	-40.9%	798	942	-15.2%	1,368	1,347	1.6%
Germany	91	106	-14.6%	646	726	-11.0%	1,108	1,279	-13.4%
Taiwan	73	54	35.2%	435	535	-18.8%	745	833	-10.6%
India	35	38	-8.7%	401	471	-14.9%	688	762	-9.7%
All Other	1,112	1,151	-3.4%	7,844	8,790	-10.8%	13,447	14,372	-6.4%
Total	1,956	1,974	-0.9%	14,325	15,826	-9.5%	24,557	25,826	-4.9%

U.S. IMPORTS OF FINISHED STEEL MILL PRODUCTS 3 MONTHS ROLLING AVERAGE (thousands of net tons)			
Product	Preliminary 3 Mos. Rolling Avg. May. - Jul.	Actual 3 Mos. Prior Feb. - Apr.	Current 3 Months vs 3 Months Prior % Change
Oil Country Goods	250	240	4.0%
Sheets Hot Rolled	235	221	6.3%
Line Pipe	209	224	-6.8%
Bars - Hot Rolled	173	121	43.3%
Sheets & Strip Galv Hot	145	169	-14.3%
Sheets Cold Rolled	113	126	-10.2%
Bars - Reinforcing	100	94	7.3%
Wire Rods	90	70	29.5%
Plates in Coils	84	102	-17.3%
Standard Pipe	78	76	3.1%
All Other	552	589	-6.2%
Total	2,030	2,031	-0.1%

U.S. IMPORTS OF FINISHED STEEL MILL PRODUCTS 3 MONTHS ROLLING AVERAGE (thousands of net tons)			
Country	Preliminary 3 Mos. Rolling Avg. May. - Jul.	Actual 3 Mos. Prior Feb. - Apr.	Current 3 Months vs 3 Months Prior % Change
South Korea	261	292	-10.6%
China	172	130	31.8%
Japan	150	173	-13.3%
Turkey	110	111	-1.6%
Germany	87	104	-16.7%
Taiwan	58	73	-21.1%
Netherlands	56	35	62.1%
India	53	60	-11.8%
Italy	50	46	10.2%
United Kingdom	29	37	-21.4%
All Other	1,005	970	3.6%
Total	2,030	2,031	-0.1%

Monthly Imports 2013 vs. 2012

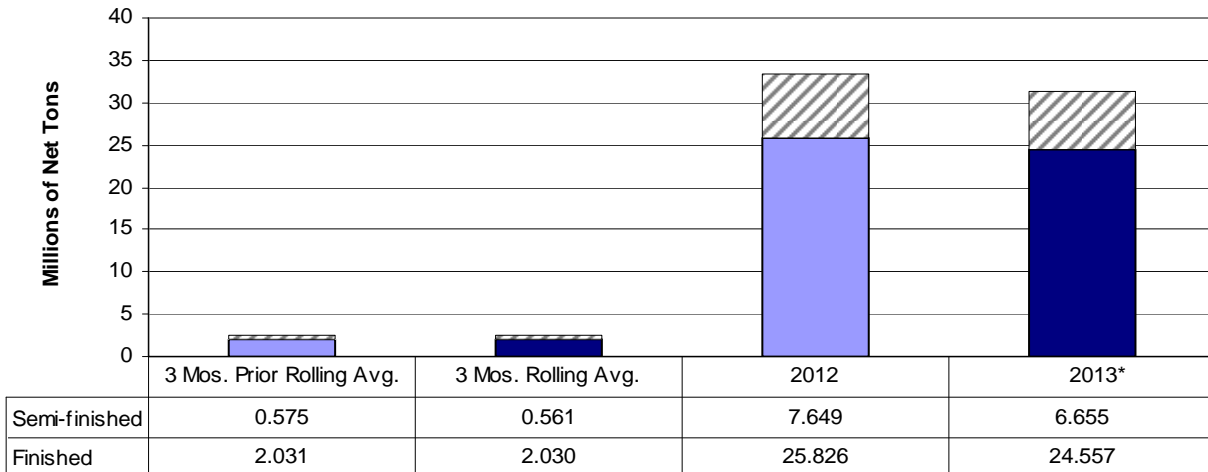
■ Finished ▨ Semi-finished



% change finished imports July 2013 vs July 2012 = -11.9%

3 Month Rolling Averages and 2013 vs. 2012

■ Finished ▨ Semi-finished



% change finished imports 3 Mos. Rolling Avg. vs. 3 Mos. Prior = -0.1%

% change semi-finished imports 2013 vs 2012 = -13.0%

% change finished imports 2013 vs 2012 = -4.9%

* annualized

AISI serves as the voice of the North American steel industry in the public policy arena and advances the case for steel in the marketplace as the preferred material of choice. AISI also plays a lead role in the development and application of new steels and steelmaking technology. AISI is comprised of 24 member companies, including integrated and electric furnace steelmakers, and 123 associate members who are suppliers to or customers of the steel industry. AISI's member companies represent over three quarters of both U.S. and North American steel capacity. For more news about steel and its applications, view AISI's website at www.steel.org.

-#####-