



PRELIMINARY STEEL IMPORTS INCREASE 4% IN APRIL
Import Market Share 24% in April

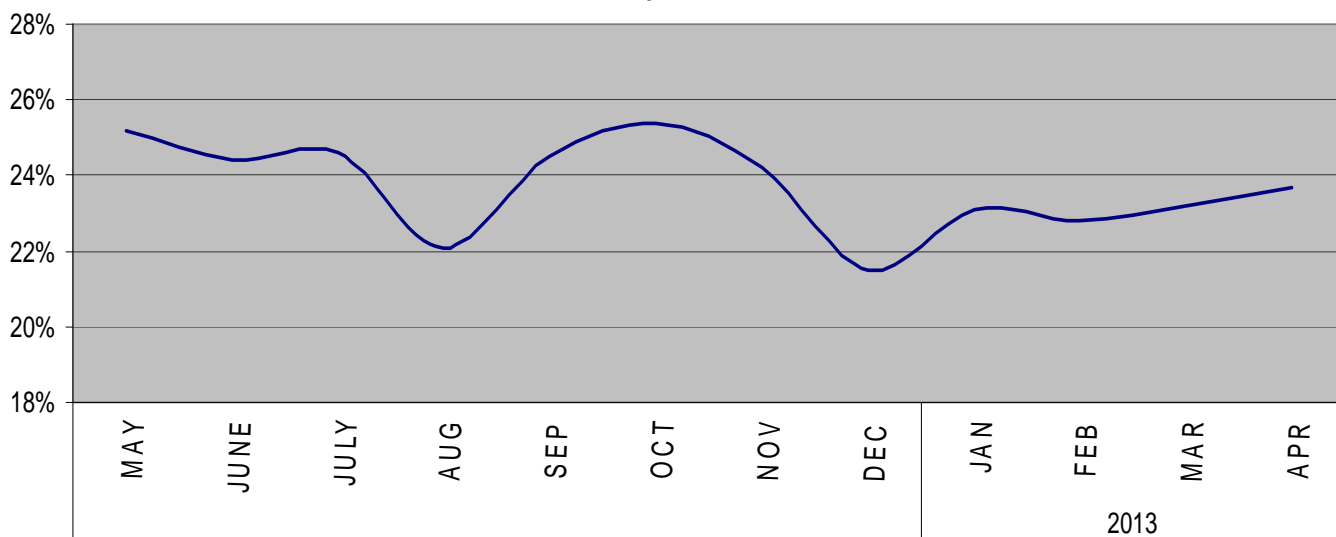
Washington, D.C. – Based on preliminary Census Bureau data, the American Iron and Steel Institute (AISI) reported today that the U.S. imported a total of 2,680,000 net tons (NT) of steel in April, including 2,087,000 net tons (NT) of finished steel (up 4% and 1%, respectively, vs. March final data). Year-to-date (YTD) total and finished steel imports are 10,375,000 and 8,178,000 net tons (NT), respectively, down 12% and 9% vs. 2012. Annualized total and finished steel imports in 2013 would be 31.1 and 24.5 million NT, down 7% and 5% respectively vs. 2012. Finished steel import market share was an estimated 24% in April and is estimated at 23% YTD.

Key finished steel products with a significant import increase in April 2013 compared to March are plates-in-coils (up 61%), standard pipe (up 43%), cut lengths plates (up 43%) and wire rods (up 39%). Major products with significant YTD import increases vs. the same period last year are sheets and strip hot dipped galvanized (up 11%).

Steel Mill Product	Apr. (prelim)	Mar. final	% var Apr. vs. Mar.	(4 mo.) YTD 2013	(4 mo.) YTD 2012	% var '13 vs. '12	2013 Ann.	2012 12 mo.	% var 2013 ann. vs 2012 12 mo.
Ingots and Billets and Slabs	589,830	506,606	16.4%	2,186,904	2,749,130	-20.5%	6,560,711	7,605,694	-13.7%
Oil Country Goods	261,904	254,053	3.1%	1,016,883	1,242,956	-18.2%	3,050,648	3,619,704	-15.7%
Line Pipe	237,589	220,510	7.7%	916,158	931,443	-1.6%	2,748,474	2,774,485	-0.9%
Sheets Hot Rolled	204,932	220,591	-7.1%	875,476	948,994	-7.7%	2,626,427	2,815,577	-6.7%
Sheets & Strip Galv Hot Dipped	161,074	189,189	-14.9%	703,867	634,189	11.0%	2,111,600	2,002,258	5.5%
Sheets Cold Rolled	124,264	117,740	5.5%	519,017	504,334	2.9%	1,557,052	1,620,978	-3.9%
Bars - Hot Rolled	120,931	130,804	-7.5%	501,670	494,438	1.5%	1,505,009	1,543,965	-2.5%
Bars - Reinforcing	38,328	160,217	-76.1%	398,514	476,304	-16.3%	1,195,541	979,433	22.1%
Plates in Coils	126,110	78,172	61.3%	386,365	577,003	-33.0%	1,159,094	1,542,156	-24.8%
Plates Cut Lengths	114,831	80,428	42.8%	375,854	477,360	-21.3%	1,127,562	1,391,859	-19.0%
Standard Pipe	93,589	65,508	42.9%	299,463	319,220	-6.2%	898,389	966,719	-7.1%
Wire Rods	85,787	61,657	39.1%	281,317	449,459	-37.4%	843,951	1,096,440	-23.0%
Wire Drawn	64,076	56,986	12.4%	239,919	220,475	8.8%	719,758	683,930	5.2%
Sheets & Strip All Other Mkt.	70,094	62,406	12.3%	234,836	250,174	-6.1%	704,507	662,213	6.4%
Structural Shapes Heavy	52,091	53,531	-2.7%	203,821	196,609	3.7%	611,462	482,158	26.8%
Mechanical Tubing	50,442	38,824	29.9%	179,858	230,007	-21.8%	539,573	658,305	-18.0%
Tin Plate	41,115	42,334	-2.9%	165,634	156,744	5.7%	496,902	470,802	5.5%
All Other	243,117	230,852	5.3%	889,611	888,817	0.1%	2,668,840	2,557,892	4.3%
TOTAL	2,680,104	2,570,408	4.3%	10,375,167	11,747,656	-11.7%	31,125,500	33,474,568	-7.0%
SUBTOTAL Finished Imports	2,086,963	2,061,319	1.2%	8,177,531	8,988,224	-9.0%	24,532,594	25,825,787	-5.0%

In April, the largest volumes of finished steel imports from offshore were all from Asia and Europe. They were from South Korea (248,000 NT, down 22%), Japan (208,000 NT, up 14%), Germany (115,000 NT, up 57%), China (106,000 NT, down 22%) and Taiwan (81,000 NT, up 20%). For four months of 2013, the largest offshore suppliers were South Korea (1,210,000 NT, down 2%), Japan (657,000 NT, down 1%), China (553,000 NT, up 26%), Turkey (468,000 NT, down 31%) and Germany (362,000 NT, down 8%). Below are charts on estimated steel import market share in recent months and on finished steel imports from offshore by country.

Estimated Finished Steel Import Market Share for the Past 12 Months

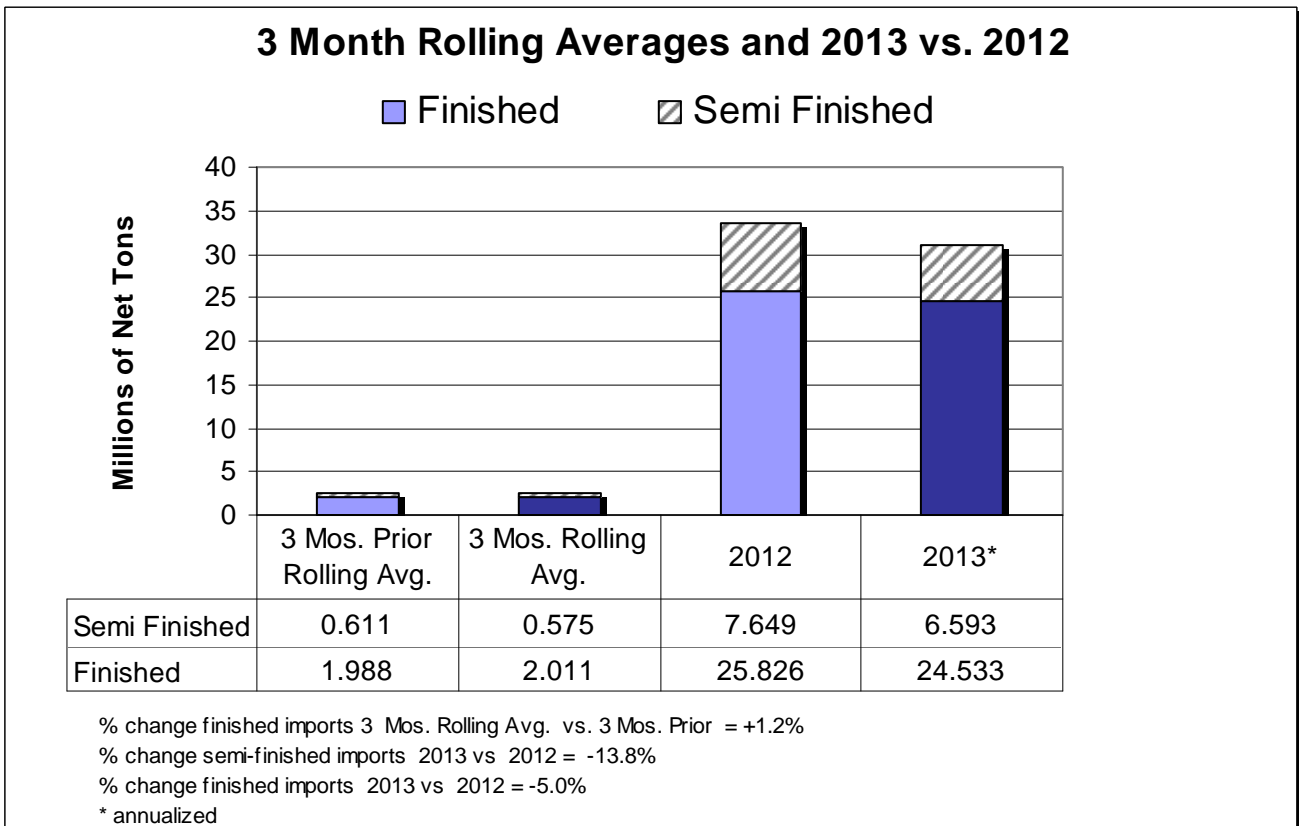
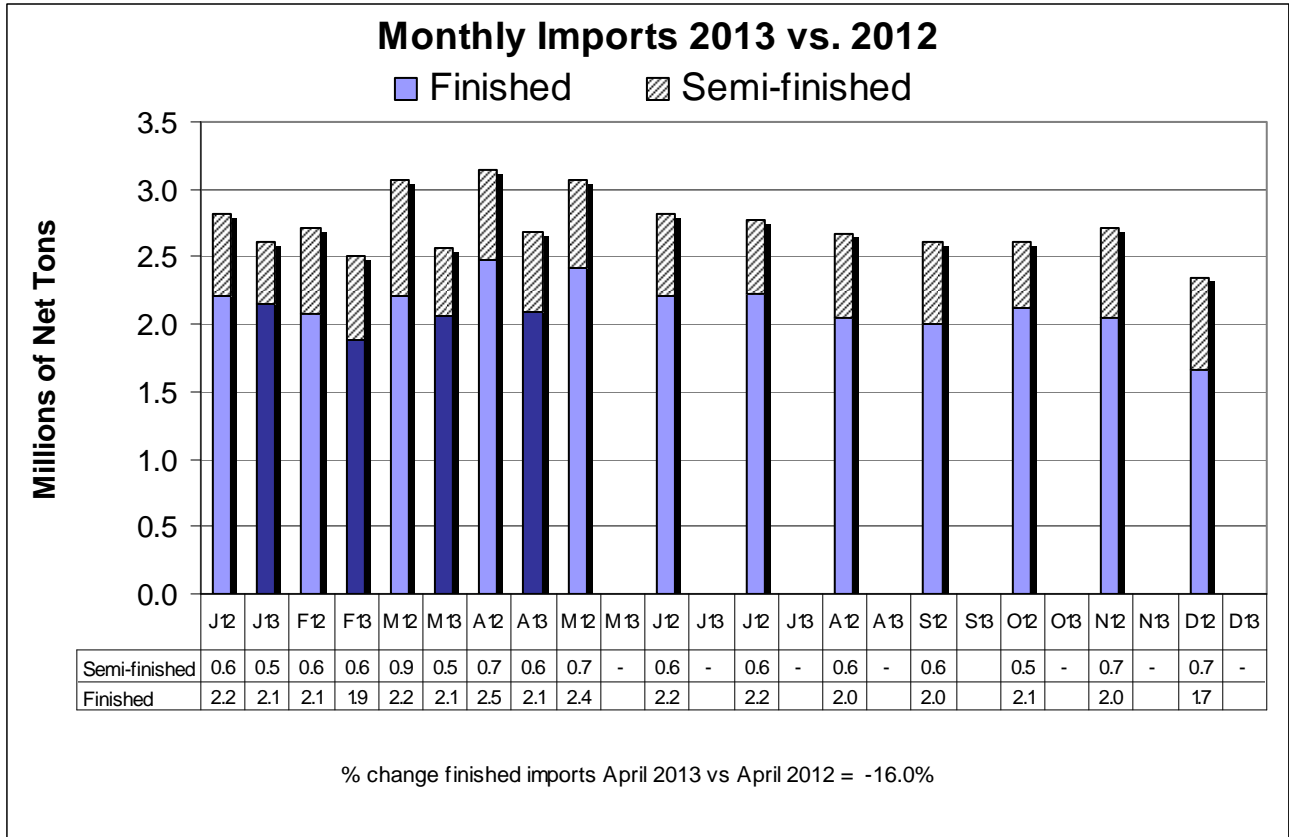


**U.S. IMPORTS OF FINISHED STEEL MILL PRODUCTS
BY COUNTRY OF ORIGIN
(thousands of net tons)**

COUNTRY	Apr. 2013	Mar. 2013	%incr. Apr. vs Mar.	(4 mo.) YID 2013	(4 mo.) YID 2012	%incr. '13 YID vs '12	2013 full year (est)	2012 Annual	%incr. 2013 vs '12
South Korea	248	318	-22.0%	1,210	1,234	-1.9%	3,631	3,651	-0.5%
Japan	208	182	14.3%	657	663	-0.9%	1,971	1,931	2.1%
China	106	136	-21.8%	553	439	26.0%	1,660	1,652	0.5%
Turkey	66	154	-56.8%	469	684	-31.4%	1,407	1,347	4.5%
Germany	115	73	56.6%	362	393	-7.8%	1,087	1,279	-15.0%
Taiwan	81	68	19.6%	261	319	-18.2%	784	833	-5.9%
India	60	75	-20.4%	244	275	-11.5%	731	762	-4.1%
All Other	1,202	1,055	13.9%	4,421	4,981	-11.2%	13,262	14,372	-7.7%
Total	2,087	2,061	1.2%	8,178	8,988	-9.0%	24,533	25,826	-5.0%

U.S. IMPORTS OF FINISHED STEEL MILL PRODUCTS 3 MONTHS ROLLING AVERAGE (thousands of net tons)			
Product	Preliminary 3 Mos. Rolling Avg. Feb. - Apr.	Actual 3 Mos. Prior Nov. '12 - Jan '13	Current 3 Months vs 3 Months Prior % Change
Oil Country Goods	240	244	-1.8%
Line Pipe	224	223	0.4%
Sheets Hot Rolled	212	231	-8.0%
Sheets & Strip Galv Hot	169	174	-2.7%
Sheets Cold Rolled	126	153	-17.1%
Bars - Hot Rolled	121	131	-7.9%
Plates Cut Lengths	102	69	48.1%
Plates in Coils	102	119	-14.9%
Bars - Reinforcing	94	92	2.1%
Standard Pipe	76	71	6.7%
All Other	546	482	13.3%
Total	2,011	1,988	1.2%

U.S. IMPORTS OF FINISHED STEEL MILL PRODUCTS 3 MONTHS ROLLING AVERAGE (thousands of net tons)			
Country	Preliminary 3 Mos. Rolling Avg. Feb. - Apr.	Actual 3 Mos. Prior Nov. '12 - Jan '13	Current 3 Months vs 3 Months Prior % Change
South Korea	283	273	3.6%
Japan	173	123	40.4%
China	129	165	-22.1%
Turkey	111	99	13.0%
Germany	96	100	-3.8%
Taiwan	73	59	24.2%
India	60	59	0.1%
Italy	46	36	26.0%
France	37	22	68.9%
Netherlands	35	63	-45.4%
All Other	970	989	-1.9%
Total	2,011	1,988	1.2%



AISI serves as the voice of the North American steel industry in the public policy arena and advances the case for steel in the marketplace as the preferred material of choice. AISI also plays a lead role in the development and application of new steels and steelmaking technology. AISI is comprised of 24 member companies, including integrated and electric furnace steelmakers, and 125 associate members who are suppliers to or customers of the steel industry. AISI's member companies represent over three quarters of both U.S. and North American steel capacity. For more news about steel and its applications, view AISI's website at www.steel.org.

-#####-